

Unite Your Audience

The Martin Audio Experience



PRODUCT CATALOGUE 2025





Contents

LINE ARRAYS AND CONSTANT CURVATURE

Multi-cellular Loudspeaker Array (MLA®) Self-Powered Systems	2-11
Wavefront Precision Passive Systems	12-15
O-LINE – Micro Line Array	16-17
TORUS – Constant Curvature Array	18-21
VU-NET™ Software	22
DISPLAY™ Software	23-25

SUBWOOFERS

SX Series	26-31
-----------	-------

STAGE MONITORS

XE Series	32-33
LE Series	34-35

SELF-POWERED POINT SOURCE

CDD-LIVE! Series	36-37
BlacklineX Powered Series	38-39

PASSIVE POINT SOURCE

TH Series	40-41
FlexPoint Series	42-45
BlacklineX Series	46-49
CDD™ Series	50-53
CDD Weatherised™ Series	54-57
ADORN Commercial Series	58-61

ELECTRONICS

Amplifiers	62-65
Digital Loudspeaker Controllers	66-67



Sziget Festival, Hungary

Multi-cellular Loudspeaker Array (MLA®) Systems



With multiple awards for innovation, the MLA Series — comprising MLA, MLA Compact and MLA Mini — represents the first fundamental change in array technology since the introduction of line array over twenty years ago.

MLA's combination of cellular drive and automated numerical optimisation delivers much more consistent sound across the audience, puts an end to trial-and-error tuning sessions and reduces sound spill — both on stage and beyond the audience boundary.

MLA technology is a departure from the principles behind conventional line arrays, where the focus is on producing coherent wavefronts as they exit the speaker grilles — giving the user little control over what reaches the ears of the audience. MLA cellular technology takes the opposite approach — the user specifies the SPL and frequency response required at the front rows, the mix position and the rear seats, and intelligent optimisation software automatically determines the array configuration and controls each individual cell in the array to produce that result.

The MLA Series offers new solutions — the MLA touring system resolves the conflicting requirements of audience and local residents at outdoor festivals by delivering the highest sound levels out-front without exceeding strict noise pollution levels off-site. At the other end of the scale, the versatile MLA Mini opens up a wide range of portable live sound applications for smaller venues, as well as a myriad of installation opportunities.



Glastonbury, UK

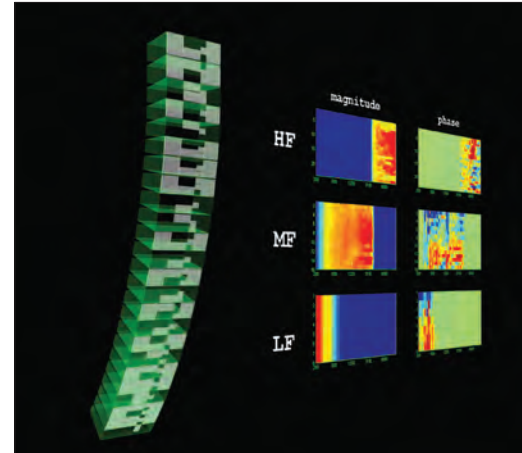
MLA Cellular Technology

MLA, MLA Compact and MLA Mini all feature cellular drive — where each LF, MF and HF cell in the array has its own onboard DSP and amplification under the control of DISPLAY™ automated intelligent software. A 24-box MLA system will have 144 individual cells, a 16-box MLA Compact system will have 80 cells, and a 16-box MLA Mini will have 32 cells.

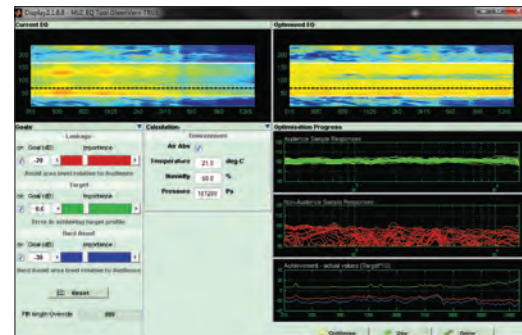
With each cell in the array under computer control, MLA Series systems are not constrained by the 3dB decrease in SPL with doubling of distance associated with conventional line arrays — enabling the engineer's exact mix to be delivered throughout the audience with a degree of control, consistency and repeatability not previously possible.

'Hard avoid' areas, such as on-stage, ceilings, balcony edges and beyond the venue perimeter can be programmed in and vertical coverage can also be fine-tuned after rigging without the need to reposition the array or change the inter-cabinet splay angles.

By departing from line array convention, and focusing on what arrives at the audience instead of what leaves the array, MLA cellular technology holds both SPL and frequency response within a very tight window – from the front rows to the rear balconies.



MLA cellular drive



Automated optimisation



MLA System

MLA system components comprise the MLA 3-way array enclosure, MLD downfill and MLX Sub-bass. MLA is a fully-integrated system, with Class D amplification, U-NET™ control network and DSP all integrated within each enclosure – simplifying set-up and eliminating long, heavy-gauge cable runs.

An MLA touring system is complete and ready-to-use, with enclosures, flying hardware, software, cabling, flight cases and training all included in the system package.

FEATURES

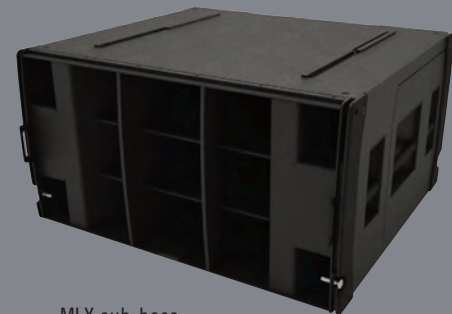
- Cellular array with built-in amplification, DSP and digital networking
- 6 dedicated Class D amplifier channels per enclosure for individual powering and DSP control of individual cells
- Switch mode power supply with PFC (Power Factor Correction) and global mains voltage operation
- Three-way all-horn design delivers LF/MF/HF peak SPL's of 140/139/145 dB @ 1m from a single enclosure
- Fast, integral flying system for suspension of up to 24 enclosures
- True 90° (-6dB) horizontal constant directivity, mid and high frequency pattern control. Consistent and usable out to 120° (-10dB)
- 60Hz-18kHz \pm 3dB full bandwidth frequency response

APPLICATIONS

- Large-scale touring sound reinforcement for outdoor festivals, stadiums, arenas and concert halls
- Premium fixed installations in concert halls, theatres and sports venues



MLA array



MLX sub-bass



Royal Albert Hall, UK

MLA Compact

Scalable and versatile, MLA Compact brings MLA technology to the wide range of applications that do not require the full power and throw of the MLA. Its compact size belies its output capabilities – a 12-box MLA Compact array can easily deliver full rock SPL's in a 5000 seat venue, whilst a 24-box array will approach the output of many 'full-size' systems.

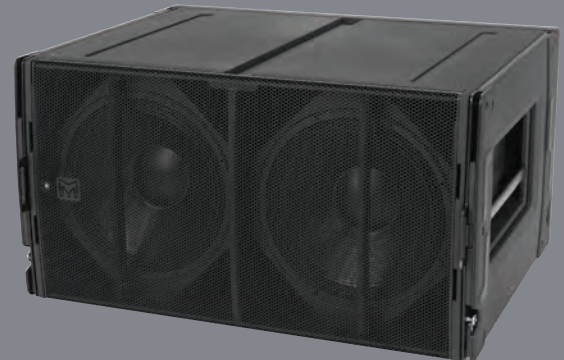
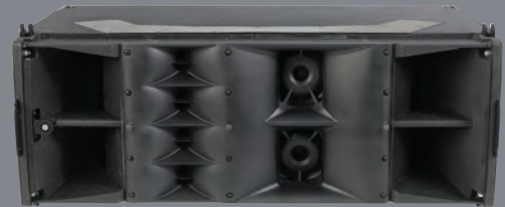
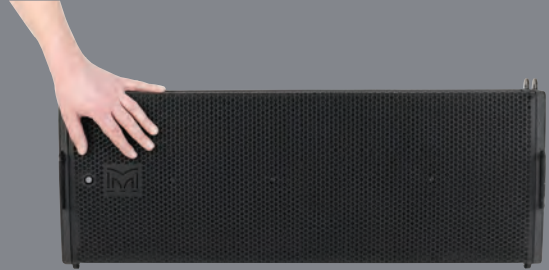
The MLA Compact is partnered by either the DSX ground-stacked, powered sub-bass, or the DSX-F flying version.

FEATURES

- Cellular array with built-in amplification, DSP and digital networking
- 5 dedicated Class D amplifier channels per enclosure for individual powering and DSP control of individual cells
- Switch mode power supplies with PFC (Power Factor Correction) and global mains voltage operation
- Three-way all-horn design delivers LF/MF/HF peak SPL's of 135/135/135 dB @ 1m from a single, compact enclosure
- Fast, integral flying system for suspension of up to 24 enclosures
- True 100° (-6dB) horizontal constant directivity, mid and high frequency pattern control. Consistent and usable out to 130° (-10dB)
- 65Hz-18kHz \pm 3dB full bandwidth frequency response

APPLICATIONS

- Premium touring sound reinforcement for medium-size venues
- Fixed installations in concert halls, theatres, ballrooms and HoW
- Side hang for MLA festival and arena systems





Orpheum Theatre, New York

MLA Mini

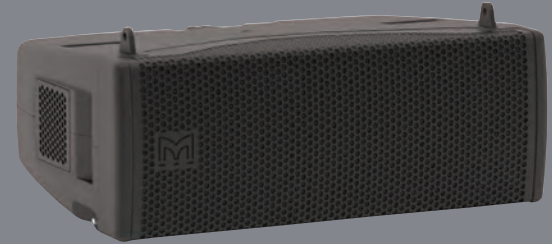
The ultra-compact MLA Mini brings revolutionary MLA cellular technology to smaller-scale portable and installed sound applications. Its very small footprint and light weight make it the system of choice for small-to-medium venues. MLA Mini is designed as a complete system, with complementary MSX mini-sub power plant, which houses networking, DSP and 9 channels of Class D amplification necessary to power and control itself and 4 MLA Mini enclosures. MLA Mini can also operate as a plug-and-play system using onboard presets instead of computer control.

FEATURES

- Cellular array format with amplification, DSP and digital networking housed in companion MSX sub-bass
- 2 Class D amplifier channels per enclosure for individual powering and DSP control of LF and HF cells
- Switched mode power supplies with PFC (Power Factor Correction) and global mains voltage operation
- Two-way design delivers LF/HF peak SPL's of 130/129dB @ 1m from a single, ultra-compact enclosure
- Fast, integral flying system for suspension of up to 16 MLA Minis
- True 100° (-6dB) horizontal constant directivity
- 76Hz-18kHz \pm 3dB frequency response
- Scalable for audiences of 100-3,000

APPLICATIONS

- Small-to-medium scale live music venues and theatres
- Portable live sound and AV events
- Fixed installations in concert halls, theatres, ballrooms and HoW
- Side-fill for MLA Compact systems





Corona Sunset Sessions, Columbia



Henley Festival, UK



Disrupt Summit, South Africa



THE QUEEN'S AWARDS
FOR ENTERPRISE:
INNOVATION
2021

Optimised Line Array Systems

In recent years, Martin Audio's award-winning MLA systems have raised the expectations of audiences, sound engineers and promoters worldwide. With independent drive of individual acoustic cells controlled by industry-leading DISPLAY™ optimisation software, MLA technology delivers unmatched sound quality and coverage consistency while reducing sound-spill.

Drawing on the research and technology behind MLA, the Wavefront Precision Series is a new generation of multipurpose line arrays designed to bring Martin Audio's legendary sound, coverage consistency and control to a broader range of touring applications, installations and budgets.

Comprising of WPL, WPC, WPS and WPM, Wavefront Precision line arrays are designed as complete systems with external iKON® multi-channel amplifiers and optimised by automated DISPLAY software.

Adopting the principle of scalable resolution, with external, dedicated multi-channel amplifiers, Wavefront Precision line arrays are uniquely flexible, upgradeable and financially accessible.



WPL



WPL is a full-scale line array which is capable of exceptionally high output for its modest size and weight. A three-way, bi-amped system, its very high output is achieved by utilising Martin Audio's trademark horn-loading technology across all frequency bands — increasing the acoustic output of the low frequency section, as well as the midrange and HF.

It incorporates 2 x 12" (300mm) drivers with Hybrid® horn/reflex loading, 2 x 6.5" (165mm) cone drivers on a midrange horn which covers the vocal frequency range from 300Hz to 4kHz, and 3 x 1" (25mm) exit HF drivers operating from 4kHz upwards. Each section features innovative horn-loading techniques and refinements which raise the acoustic performance of WPL to a superior level — both in terms of output and smooth 90° horizontal coverage patterns of the mid and HF horns. Sonically, WPL's exemplary horizontal dispersion pattern translates to an incredibly consistent frequency response off-axis, with minimal variation from the on-axis response.

The maximum peak outputs of the LF, Mid and HF sections are 139dB, 140dB and 145dB per enclosure @ 1m and 6dB crest factor, respectively — ensuring that a WPL array will meet the most demanding requirements for throw and clarity in the largest venues and outdoor events.

WPC



The WPC is a three-way, bi-amp system, featuring horn-loaded low-frequency, mid and HF sections to raise efficiency and increase output. The low frequency section consists of 2 x 10" (250mm) neodymium drivers in a unique Hybrid® configuration which marries the benefits of horn and reflex loading. Each driver is slot-loaded into a short horn to give a high sensitivity of 103dB @ 1m/2.83V, while the rear of the driver is reflex-loaded to extend the LF output. The punch and low-frequency extension produced from such a small enclosure volume are remarkable.

Mid and HF horns are physically separate — a key factor in WPC's exemplary 100° horizontal constant directivity dispersion pattern. The midrange horn design utilises 2 x 5" (125mm) neodymium drivers to produce a high SPL of 109dB @ 1m/2.83V, while the HF section employs 4 x 0.7" (19mm) exit neodymium compression drivers which feed 4 individual horns. Use of multiple small HF drivers instead of a more traditionally-used large format compression driver results in less distortion and a more extended HF response.

WPS



A passive 3-way system which integrates a high density of drive units in a very compact enclosure. It features 2 x 8" (200mm) LF drivers, 4 x 4" (100mm) midrange drivers and 4 x 1" (25mm) exit HF compression drivers loaded by a moulded HF horn which occupies the full width of the enclosure — defining the 100° horizontal constant directivity coverage pattern of both the HF and midrange sections.

The 4" midrange drivers are compression-loaded to raise efficiency and enter the horn walls via annular slots close to the HF throat to sum effectively with the HF wavefront. In the HF section, four 1" exit compression drivers deliver pristine high frequency sound without the harshness and distortion associated with larger format devices.

The 8" LF drivers are set back behind the walls of the HF horn, with a small volume of air in front of each driver increasing the output at the upper end of its operating range. The LF exit apertures are spaced apart horizontally to provide useful LF horizontal pattern control.

WPM



A passive 2-way system with an impedance of 16 ohms, it can be driven in blocks of 1, 2, 3 or 4 resolution configuration. With a complement of 2 x 6.5" (165mm) LF drivers and a vertical column of 3 x 1.4" (35mm) aluminium dome HF drivers, the acoustic design of WPM is uniquely innovative. The LF drivers are located in the side walls of the HF horn — an arrangement which would introduce acoustic cavities which would degrade the horizontal dispersion if conventional cone drivers were used. WPM's drivers adopt an elegant solution by having solid moulded diaphragms which match the contours of the horn walls and maintain the continuity of the horn profile.

Each LF driver also features a demodulation ring in the neodymium motor system to minimize distortion and maximise mid-band output.

In the triple-driver HF section, each individual HF wavefront is precisely coupled to the horn throat via a short waveguide for faultless 100° horizontal constant directivity coverage.

WPL

TYPE	Three-way, bi-amp line array element
FREQUENCY RESPONSE (5)	52Hz-18kHz \pm 3dB
DRIVERS	LF: 2 x 12" (300mm)/3" (75mm) voice coil, ultra-long excursion, neodymium magnet drivers, Hybrid" bass horn loaded MF: 2 x 6.5" (165mm)/2" (50mm) coil, neodymium magnet drivers, horn loaded HF: 3 x 1" (25mm) exit neodymium magnet compression drivers, horn loaded
SYSTEM RESOLUTION	1 or 2 enclosures per pair of amplifier channels (Bi-amp)
MAXIMUM SPL (9)	LF: 139dB, MF: 140dB, HF: 145dB
NOMINAL IMPEDANCE	LF: 8 ohms, MF + HF: 8 ohms
DISPERSION	90° horizontal (-6dB), 120° horizontal (-10dB) 7.5° vertical
CROSSOVER	320Hz active, 4kHz internal passive
ENCLOSURE	Vertical trapezoid with 3.75° wall angle, multi-laminate birch and poplar-ply construction
FINISH	Black textured paint
PROTECTIVE GRILLE	Black HEX perforated steel
DIMENSIONS (ex. pins)	(W) 1136mm x (H) 371mm x (D) 526mm (W) 44.7in x (H) 14.6in x (D) 20.7in
WEIGHT	64kg (141lbs)



WPS

TYPE	Three-way, passive line array element
FREQUENCY RESPONSE (5)	70Hz-18000Hz \pm 3dB
DRIVERS	LF: 2 x 8" (200mm)/2" (50mm) voice coil, long excursion, vented yoke, neodymium magnet drivers MF: 4 x 4" (100mm)/1" (25mm) coil, neodymium magnet drivers, compression loaded HF: 4 x 1" (25mm) exit/1.4" (35mm) HT Polymer diaphragm, neodymium magnet compression drivers
SYSTEM RESOLUTION	1 to 3 enclosures per amplifier channel (ik42)
MAXIMUM SPL (9)	133dB peak
NOMINAL IMPEDANCE	6 ohms
DISPERSION	100° horizontal (-6dB), 120° horizontal (-10dB), 10° vertical
CROSSOVER	520Hz, 1.6kHz internal passive
ENCLOSURE	Vertical trapezoid with 5° wall angle, multi-laminate birch and poplar-ply construction
FINISH	Black textured paint
PROTECTIVE GRILLE	Black HEX perforated steel
FITTINGS	3-point rigging system, 2 x side pocket handles 2 x rear grip handles
DIMENSIONS	(W) 650mm x (H) 261mm x (D) 400mm (W) 25.6in x (H) 10.3in x (D) 15.8in
WEIGHT	27kg (60lbs)



WPC

TYPE	Three-way, bi-amp line array element
FREQUENCY RESPONSE (5)	65Hz-18kHz \pm 3dB
DRIVERS	LF: 2 x 10" (250mm)/2.5" (63mm) voice coil, long excursion, vented pole, neodymium magnet drivers, Hybrid" slot-horn loaded MF: 2 x 5" (125mm)/1.5" (38mm) coil, neodymium magnet drivers, horn loaded HF: 4 x 0.7" (19mm) exit neodymium magnet compression drivers, horn loaded
SYSTEM RESOLUTION	1 to 3 enclosures per pair of amplifier channels (Bi-amp)
MAXIMUM SPL (9)	135dB peak
NOMINAL IMPEDANCE	LF: 8 ohms, MF + HF: 8 ohms
DISPERSION	100° horizontal (-6dB), 130° horizontal (-10dB), 10° vertical
CROSSOVER	440Hz active, 4.4kHz internal passive
ENCLOSURE	Vertical trapezoid with 5° wall angle, multi-laminate birch and poplar-ply construction
FINISH	Black textured paint
PROTECTIVE GRILLE	Black HEX perforated steel
DIMENSIONS	(W) 772mm x (H) 319mm x (D) 421mm (W) 30.4in x (H) 12.6in x (D) 16.6in
WEIGHT	35kg (77.1lbs)



WPM

TYPE	Two-way, passive line array element
FREQUENCY RESPONSE (5)	76Hz-18kHz \pm 3dB
DRIVERS	LF: 2 x 6.5" (165mm) contoured-diaphragm /2" (50mm) edge-wound CCAW voice coil, neodymium magnet drivers, reflex loaded HF: 3 x 1.4" (35mm) aluminium dome /1.4" (35mm) voice coil, neodymium magnet compression drivers on constant-directivity waveguide
SYSTEM RESOLUTION	1 to 4 enclosures per amplifier channel
MAXIMUM SPL (9)	130dB peak (1 cabinet)
NOMINAL IMPEDANCE	16 ohms
DISPERSION	100° horizontal (-6dB), 125° horizontal (-10dB) 10° vertical
DIMENSIONS	(W) 500mm x (H) 185mm x (D) 377mm
WEIGHT	14kg (30.9lbs)





St Andrews Cathedral, Sydney, Australia

O-Line™

NOW WITH SCALABLE RESOLUTION

O-Line™ is a versatile, micro-line array now with scalable resolution designed to tame a wide variety of architectural and challenging acoustic environments.

O-Line delivers consistent audio coverage with unprecedented accuracy in a wide variety of architectural environments, using just one amplifier channel per array in many applications. By utilising a complement of unique, Martin Audio designed drivers, and mechanical alignment techniques, simple EQ and Limiting is the only processing required.

O-Line is an award winning aesthetically pleasing modular micro line array designed for a wide variety of architectural applications – from houses of worship to transport terminals.

It combines innovative acoustic design with powerful optimisation software to achieve optimum coverage with unprecedented accuracy over a pre-defined area.

In many applications an O-Line array can be driven using only one amplifier channel, with simple EQ and limiting the only processing required.

It can now also be taken into a new dimension of coverage, consistency and control when combined with compatible iKON amplifiers featuring DSP to independently control and power each individual enclosure. This unlocks the full potential of O-Line — further refining coverage consistency and increasing the ability to ‘dial-out’ the influence of the room by accessing DISPLAY’s ‘hard avoid’ capability and electronically adjustable coverage.

Unlike many DSP ‘steered’ columns, an O-Line array does not produce unwanted vertical sidelobes in the audio band. This is critical in reverberant environments as sidelobes firing above and below the array simply adds to the reverberant energy, impacting on intelligibility. O-line’s ability to reproduce very high frequencies without sidelobes makes it the ideal solution for both full-range speech and music reproduction in reverberant spaces.

An O-Line array is finished in a neutral light grey that blends into the background of most architectural spaces with modular design in multiples of four cabinets. Sonically, it is very clean and musical, and capable of surprisingly high output levels for its very small size with 16 cabinets capable of an astonishing 134dB [peak] and a throw distance of up to 40 metres.

O-Line™



TYPE	Two-way micro line array module
FREQUENCY RESPONSE (5)	85Hz-20kHz ± 3dB, -10dB @ 76Hz
DRIVERS	2 x 3.5" (87mm) 1" (25mm) voice coil LF drivers 5 x 0.55" (14mm) soft dome tweeters
RATED POWER (2)	50W AES, 200W peak
SENSITIVITY (8)	84dB at LF rising to 92dB at HF
MAXIMUM SPL (9)	104dB continuous, 110dB peak
NOMINAL IMPEDANCE	16 ohms
DISPERSION (-6dB)	100° horizontal, 5° vertical
CONNECTORS	4 pole socket
FITTINGS	6 x M8 fixings for wall and flying brackets
DIMENSIONS	(W) 246mm x (H) 115mm x (D) 198mm (W) 9.7ins x (H) 4.5ins x (D) 7.8ins
WEIGHT	3.6kg (7.9lbs)



Palacio Congressos Oviedo, Spain

TORUS – Constant Curvature Array

For short and medium-throw applications of typically 15-30m (50-100ft), a full-blown line array is not always practical, optimal or affordable. Conversely, a point-source solution may not be able to achieve sufficient coverage with the SPL required.

TORUS constant curvature arrays are designed to fill that gap perfectly.

Adopting a hybrid approach between line array and point-source, TORUS arrays can be configured to deliver plenty of power over a specified area — combining consistent coverage and SPL profile with cost efficiency.

Designed for professional sound reinforcement and fixed installations, TORUS cabinets can be arrayed either vertically or horizontally — offering full configuration flexibility to match the coverage and SPL requirements of the venue.

Drawing on extensive research, TORUS in combination with compatible iKON amplifiers overcome issues associated with typical constant curvatures — advancing the constant curvature acoustic concept to achieve new levels of performance and refinement.

TORUS



T1230



TYPE	Passive 2-way Constant Curvature 30° enclosure
FREQUENCY RESPONSE (with iKON settings)	65Hz - 18kHz ± 3dB, -10dB @ 50Hz
DRIVERS	LF: 12", 3" Voice Coil, Neodymium HF: 3 x 1" exit, 1.4" Voice Coil, HT Polymer dome neodymium compression driver (2.83V 1m free-field) 99dB
SENSITIVITY	8 ohms
NOMINAL IMPEDANCE	AES 400W, PEAK 1600W
RATED POWER	126dB continuous, 132dB peak*
MAXIMUM SPL (SYSTEM)	60-75-90° horizontal, 30° vertical
DISPERSION	1+/- or 2+/-
PIN CONNECTIONS (INPUT)	1+/- and 2+/-
PIN CONNECTIONS (LINK)	(W) 650mm, (H) 350mm, (D) 442mm
DIMENSIONS	(W) 25.59ins, (H) 13.76ins, (D) 17.40ins
WEIGHT	26kg (57.32 lbs)

T1215



TYPE	Passive 2-way Constant Curvature 15° enclosure
FREQUENCY RESPONSE (with iKON settings)	65Hz - 18kHz ± 3dB, -10dB @ 50Hz
DRIVERS	LF: 12", 3" Voice Coil, Neodymium HF: 3 x 1" exit, 1.4" Voice Coil, HT Polymer dome neodymium compression driver (2.83V 1m free-field) 100dB
SENSITIVITY	8 ohms
NOMINAL IMPEDANCE	AES 400W, PEAK 1600W
RATED POWER	128dB continuous, 134 dB peak*
MAXIMUM SPL (SYSTEM)	60-75-90° horizontal, 15° vertical
DISPERSION	1+/- or 2+/-
PIN CONNECTIONS (INPUT)	1+/- and 2+/-
PIN CONNECTIONS (LINK)	(W) 650mm, (H) 369mm, (D) 452mm
DIMENSIONS	(W) 25.59ins, (H) 14.51ins, (D) 17.80ins
WEIGHT	31kg (68.34 lbs)





Clockstock Festival, UK

T820



TYPE	Passive 2-way, 8" Constant Curvature 20° enclosure
FREQUENCY RESPONSE (with iKON settings)	70Hz - 18kHz ± 3dB, -10dB @ 56Hz
DRIVERS	LF: 8" with 2" Voice coil, Neodymium HF: 2 x 1" exit, 1.4" Voice coil, HT Polymer dome neodymium compression driver (2.83V 1m free-field) 97dB
SENSITIVITY	8 ohms
NOMINAL IMPEDANCE	AES 200W, PEAK 800W
RATED POWER	124dB continuous, 130dB peak*
MAXIMUM SPL (SYSTEM)	100° horizontal, 20° vertical
DISPERSION	1+/- or 2+/-
PIN CONNECTIONS (INPUT)	1+/- and 2+/-
PIN CONNECTIONS (LINK)	W) 500mm, (H) 257mm, (D) 320mm
DIMENSIONS	(W) 19.69ins, (H) 10.12ins, (D) 12.60ins
WEIGHT	14kg (13.86 lbs)



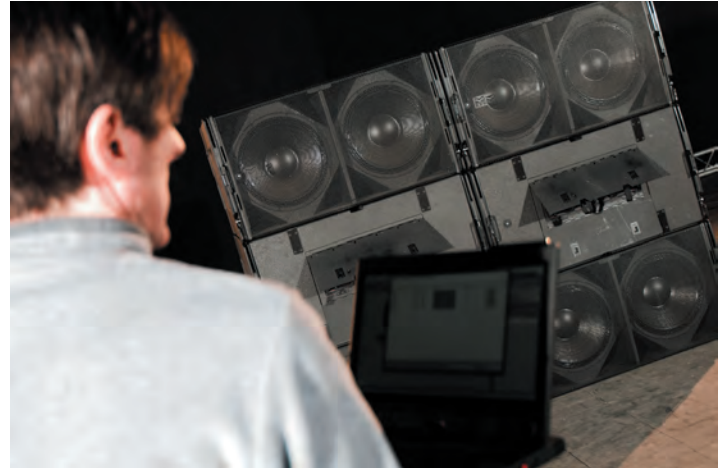
The Broadberry, USA



Perdido Bay United Methodist Church, USA

VU-NET – Control Software

The MLA series, CDD-LIVE series and any iKON amplifier-based system can all be remotely controlled from a PC or tablet running VU-NET control software. As well as monitoring and control of the system, EQ optimisations are uploaded from the program and cabinet firmware is checked and updated all via the intuitive graphical interface.



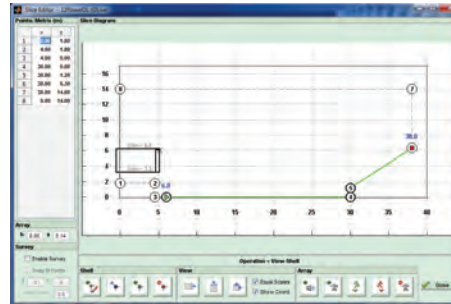
DISPLAY 2 – Optimisation and Prediction Software

DISPLAY 2 is the brain of the MLA Series, Wavefront Precision Series and O-Line. Its numerical optimisation process eliminates lengthy trial-and-error tuning sessions, so that an MLA or Wavefront Precision system achieves the required audience coverage straight out of the box.

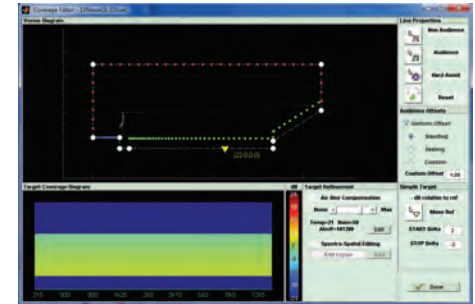
Based on a detailed acoustic model of array behaviour, it gives a very accurate prediction of the direct sound produced over the audience as well as areas where sound is to be reduced.

It takes the guesswork out of array design, deployment and control – generating highly accurate spot frequency responses and comprehensive rigging information, including mechanical load safety analysis.

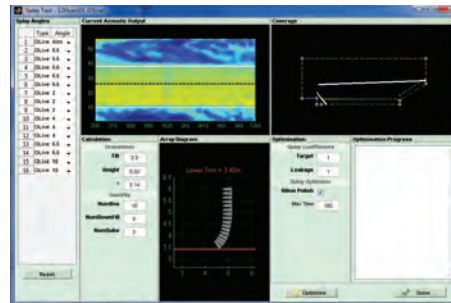
The intelligent optimisation process evaluates configurations of potential arrays against various target functions — such as frequency response, flatness and sound leakage into non-audience areas. With the computer working behind the scenes, the engineer retains full artistic control over the house curves — DISPLAY 2 simply replicates what the engineer hears at the mix position to the entire audience.*



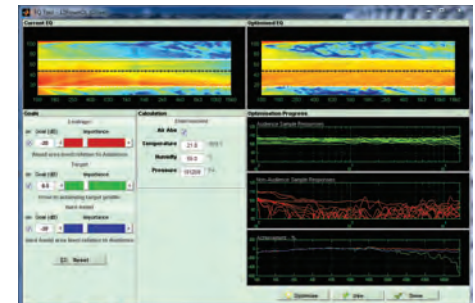
Step 1: Venue entry



Step 2: Set coverage parameters



Step 3: Calculate splay angles

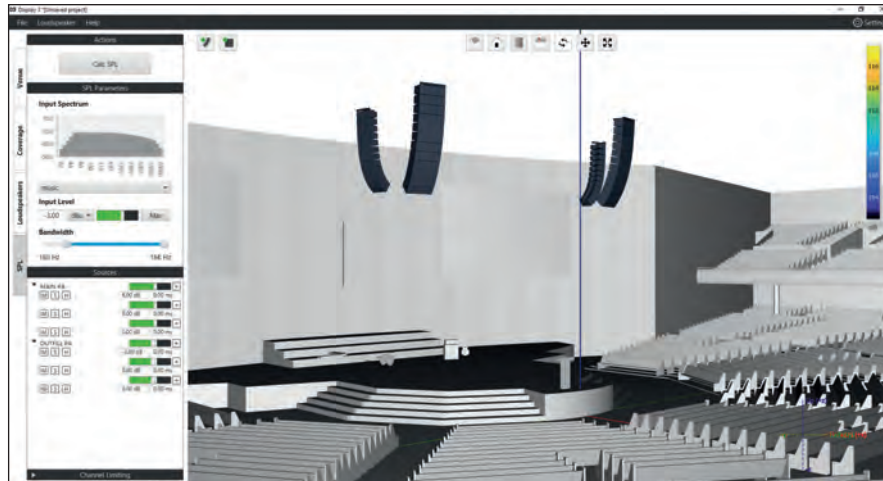


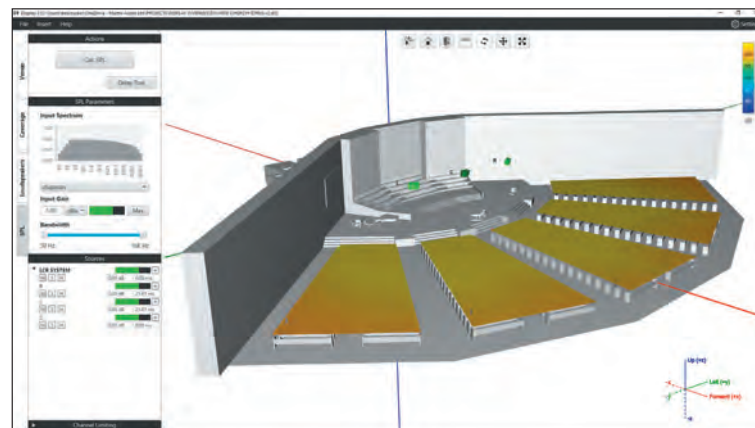
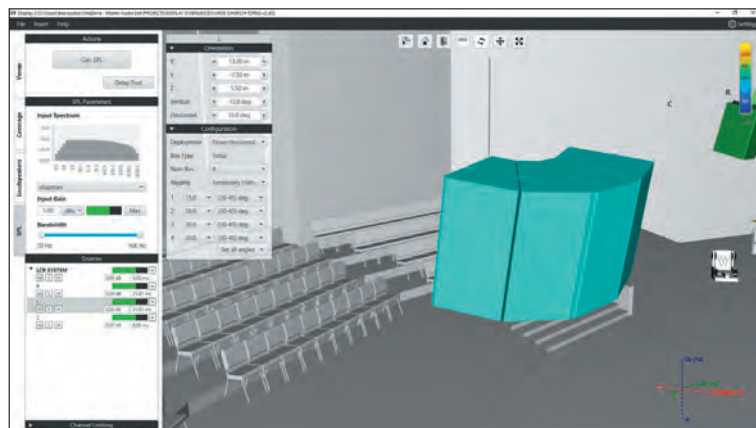
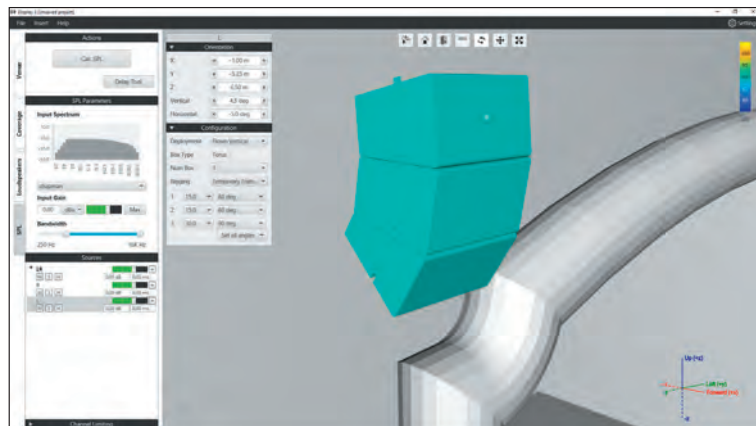
Step 4: Optimisation and upload

*For Wavefront Precision and O-Line, audience coverage consistency is also dependent upon the level of amplification per box.

DISPLAY 3 – 3D Prediction Software

DISPLAY 3 is an all-new 3D prediction software program, currently in beta, that in time will incorporate all of our current portfolio, for or a complete self-contained system design and prediction platform.







SX Subwoofers

Martin Audio's SX Series of subwoofers are designed to meet a multitude of installation and live sound application needs that call for increased impact and low frequency performance, partnering with our loudspeakers across the portfolio.

SX subwoofers offer a full complement passive and select self-powered options including everything from a slim line single 10" (SX110) for discreet install purposes through to the all-powerful chest thumping efficiency of the double-eighteen Hybrid® Horn/Reflex SXH218 suitable for concerts, festivals and nightclubs.

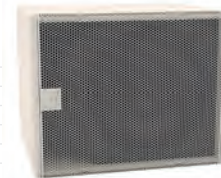
SX110

TYPE	Ultra-compact, direct radiating subwoofer
FREQUENCY RESPONSE (1)	50Hz-150Hz \pm 3dB -10dB @ 42Hz
DRIVER	1 x 10" (250mm)/2" (50mm) voice coil, long excursion, ferrite magnet
RATED POWER (2)	250W AES, 1000W peak
SENSITIVITY (10)	97dB
MAXIMUM SPL (9)	121dB continuous, 127dB peak (half space)
NOMINAL IMPEDANCE	8 ohms
DISPERSION (-6dB)	Omnidirectional
CROSSOVER	80-120Hz active
ENCLOSURE	Plywood
FINISH	Black or white
PROTECTIVE GRILLE	Perforated steel
CONNECTORS	2 x NL4 type
PIN CONNECTIONS (INPUT)	+1, -1 Link through: +2, -2
PIN CONNECTIONS (LINK)	+1, -1 Link through: +2, -2
FITTINGS	12 x M8 inserts
DIMENSIONS (INCL FEET)	(W) 417mm x (H) 297mm x (D) 415mm (W) 16.4ins x (H) 11.7ins x (D) 16.3ins
WEIGHT	12kg (26.5lbs)



SX112

TYPE	Compact, single driver, direct radiating subwoofer
FREQUENCY RESPONSE (1)	48Hz-150Hz \pm 3dB, -10dB @ 35Hz
DRIVER	12" (300mm)/3" (75mm) voice coil, long excursion, ferrite magnet, waterproof cone
RATED POWER (2)	400W AES, 1600W peak
SENSITIVITY (10)	100dB
MAXIMUM SPL (9)	126dB continuous, 132dB peak (half space)
NOMINAL IMPEDANCE	8 ohms
CONNECTORS	2 x NL4 type
FITTINGS	12 x M10 inserts
DIMENSIONS	(W) 487mm x (H) 390mm x (D) 410mm (W) 19.2ins x (H) 15.4ins x (D) 16.1ins
WEIGHT	21.5kg (47.3lbs)



SX210

TYPE	Slimline, direct radiating subwoofer
FREQUENCY RESPONSE (1)	50Hz-150Hz \pm 3dB -10dB @ 42Hz
DRIVER	2 x 10" (250mm)/2" (50mm) voice coil, long excursion, ferrite magnet
RATED POWER (2)	500W AES, 2000W peak
SENSITIVITY (10)	103dB
MAXIMUM SPL (9)	127dB continuous, 133dB peak (half space)
NOMINAL IMPEDANCE	4 ohms
CONNECTORS	2 x NL4 type
FITTINGS	16 x M8 inserts, 2 x bar handles
DIMENSIONS (INCL FEET)	(W) 718mm x (H) 295mm x (D) 465mm (W) 28.3ins x (H) 11.4ins x (D) 18.3ins
WEIGHT	20kg (44.1lbs)



SX212

TYPE	Compact, dual-driver, direct radiating subwoofer
FREQUENCY RESPONSE (1)	48Hz-150Hz \pm 3dB, -10dB @ 35Hz
DRIVER	2 x 12" (300mm)/3" (75mm) voice coil, long excursion, ferrite magnet, waterproof cone
RATED POWER (2)	800W AES, 3200W peak
SENSITIVITY (10)	106dB
MAXIMUM SPL (9)	132dB continuous, 138dB peak (half space)
NOMINAL IMPEDANCE	4 ohms
CONNECTORS	2 x NL4 type
FITTINGS	12 x M10 inserts
DIMENSIONS	(W) 872mm x (H) 390mm x (D) 437mm (W) 34.3ins x (H) 15.4ins x (D) 17.2ins
WEIGHT	39kg (86lbs)



SX115



TYPE	Direct radiating subwoofer
CROSSOVER FREQUENCY	100Hz
FREQUENCY RESPONSE 4π (5)	45Hz - 100Hz ± 3dB, -10dB @ 36Hz
DRIVERS	LF: 15" with 4" Voice coil, Ferrite Motor
SENSITIVITY	(2.83V 1m half space) 100dB
NOMINAL IMPEDANCE	8 Ohms
RATED POWER	AES 1000W, PEAK 4000W
MAXIMUM SPL (SYSTEM)	130dB continuous, 136dB peak, 142dB peak (12dB)
DISPERSION	Omni-Directional/ or Cardioid (paired)
CONNECTORS	2 x NL4
PIN CONNECTIONS (INPUT)	1+/- or 2+/-
PIN CONNECTIONS (LINK)	1+/- and 2+/-
DIMENSIONS	(W) 500mm, (H) 451mm, (D) 678mm (806mm with Casters) (W) 19.69ins, (H) 17.76ins, (D) 26.69ins (31.73ins with Casters)
WEIGHT	36.5kg (80.5lbs)

SXC115



TYPE	Compact, cardioid subwoofer
FREQUENCY RESPONSE (1)	44Hz - 150Hz ± 3dB, -10dB @ 36Hz
DRIVERS	15" (380mm)/4" (100mm) voice coil, long excursion, ferrite magnet, waterproof cone
	12" (300mm)/4" (100mm) voice coil, long excursion, neodymium magnet, waterproof cone
RATED POWER (2)	15": 1000W AES, 4000W peak 12": 800W AES, 3200W peak
SENSITIVITY (10)	101dB
MAXIMUM SPL (9)	137dB peak
NOMINAL IMPEDANCE	15": 8 ohms, 12": 8 ohms
DISPERSION	Cardioid
CONNECTOR	2 x NL4
PIN CONNECTIONS (INPUT)	15": +1, -1; 12": +2, -2
PIN CONNECTIONS (LINK)	15": +1, -1; 12": +2, -2
FITTINGS	Two skids on base, with mating channels on top M20 top-mounted thread plate for pole mounting Two bar handles on each side, 16 x M10 mounting points 16 x M8 inserts for optional castors
DIMENSIONS (INCL SKIDS)	(W) 500mm x (H) 550mm x (D) 811mm (939mm incl castors) (W) 19.69in x (H) 21.67in x (D) 31.92in (36.96in incl castors)
WEIGHT	53kg (117lbs), 56kg (124 lbs) incl castors

SXCF115



TYPE	Compact, cardioid subwoofer
FREQUENCY RESPONSE (1)	44Hz - 150Hz ± 3dB, -10dB @ 36Hz
DRIVERS	15" (380mm)/4" (100mm) voice coil, long excursion, ferrite magnet, waterproof cone
	12" (300mm)/4" (100mm) voice coil, long excursion, neodymium magnet, waterproof cone
RATED POWER (2)	15": 1000W AES, 4000W peak 12": 800W AES, 3200W peak
SENSITIVITY (10)	101dB
MAXIMUM SPL (9)	137dB peak
NOMINAL IMPEDANCE	15": 8 ohms 12": 8 ohms
DISPERSION (-6dB)	Cardioid
ENCLOSURE	Multi-laminate birch ply
FINISH	Textured black paint
PROTECTIVE GRILLE	Black HEX perforated steel
CONNECTORS	2 x NL4
PIN CONNECTIONS (INPUT)	15": +1, -1; 12": +2, -2
PIN CONNECTIONS (LINK)	15": +1, -1; 12": +2, -2

FITTINGS

Two skids on base, with mating channels on top
M20 top-mounted thread plate for pole mounting
Two bar handles on each side
16 x M8 inserts for optional castors

DIMENSIONS (INCL SKIDS)

(W) 500mm x (H) 552mm x (D) 810mm (938mm incl castors)
(W) 19.69in x (H) 21.71in x (D) 31.90in (36.94in incl castors)

WEIGHT

61.5kg (136lbs), 65kg (143lbs) incl castors

SX215



TYPE	Dual Driver, Direct radiating subwoofer
CROSSOVER FREQUENCY	100Hz
FREQUENCY RESPONSE 4π (5)	45Hz - 100Hz ± 3dB, -10dB @ 36Hz
DRIVERS	LF: 15" with 4" Voice coil, Ferrite Motor
SENSITIVITY	(2W 1m half space) 106dB
	(1W 1m half space) 103dB
NOMINAL IMPEDANCE	4 Ohms
RATED POWER	AES 2000W, PEAK 8000W
MAXIMUM SPL (SYSTEM)	136dB continuous, 142dB peak
DISPERSION	Omni-Directional/ or Cardioid (paired)
CONNECTORS	2 x NL4
PIN CONNECTIONS (INPUT)	1+/-
PIN CONNECTIONS (LINK)	1+/- and 2+/-
DIMENSIONS	(W) 961mm, (H) 463mm, (D) 679mm (807mm with Casters) (W) 37.83ins, (H) 18.23ins, (D) 26.73ins (31.77ins with Casters)
WEIGHT	64kg (141lbs)

SX118

TYPE	Compact, direct radiating subwoofer
FREQUENCY RESPONSE (1)	47Hz - 150Hz \pm 3dB, -10dB @ 4Hz
DRIVER	18" (460mm)/4" (100mm) voice coil, long excursion, ferrite magnet, waterproof cone
SENSITIVITY (10)	102dB
MAXIMUM SPL(9)	138dB peak
NOMINAL IMPEDANCE	8 ohms
CONNECTORS	2 x NL4
FITTINGS	Two skids on base, with mating channels on top 16 x M8 inserts for optional castors M20 top-mounted thread plate for pole mounting 16 x M10 mounting points 2 x bar handles, 1 on each side 4 x fittings for optional transit cover
DIMENSIONS (INCL SKIDS)	(W) 600mm x (H) 509mm x (D) 632mm (760mm including castors) (W) 24in x (H) 20.36in x (D) 25.26in (30.38in including castors)
WEIGHT	47kg (104lbs) with castors



SXC118

TYPE	Compact, cardioid subwoofer
FREQUENCY RESPONSE	43Hz - 150Hz \pm 3dB, -10dB @ 34Hz
DRIVERS	18" (460mm)/4" (100mm) voice coil, long excursion, ferrite magnet, waterproof cone 14" (356mm)/3.5" (88mm) voice coil, long excursion, neodymium magnet, waterproof cone
RATED POWER (2)	18": 1000W AES, 4000W peak 14": 800W AES, 3200W peak
SENSITIVITY	104dB
MAXIMUM SPL	140dB peak
NOMINAL IMPEDANCE	18": 8 ohms, 14": 8 ohms
DISPERSION	Cardioid
CONNECTOR	2 x NL4
FITTINGS	Two skids on base, with mating channels on top M20 top-mounted thread plate for pole mounting Two bar handles on each side Four fittings for optional transit cover 16 x M8 inserts for optional castors
DIMENSIONS (INCL SKIDS)	(W) 635mm x (H) 603mm x (D) 824mm (952mm incl castors) (W) 25in x (H) 23.7in x (D) 32.4in (37.5in incl castors)
WEIGHT	69kg (152lbs), 73kg (161lbs) incl castors



SXCF118 – FLYING VARIANT ALSO AVAILABLE

SXCF118

TYPE	Compact, cardioid subwoofer
FREQUENCY RESPONSE (1)	43Hz - 150Hz \pm 3dB, -10dB @ 34Hz
DRIVERS	18" (460mm)/4" (100mm) voice coil, long excursion, ferrite magnet, waterproof cone 14" (356mm)/3.5" (88mm) voice coil, long excursion, neodymium magnet, waterproof cone
RATED POWER (2)	18": 1000W AES, 4000W peak 14": 800W AES, 3200W peak
SENSITIVITY (10)	104dB
MAXIMUM SPL(9)	140dB peak
NOMINAL IMPEDANCE	18": 8 ohms, 14": 8 ohms
DISPERSION	Cardioid
ENCLOSURE	Multi-laminate birch ply
FINISH	Textured black polyurea
PROTECTIVE GRILLE	Black HEX perforated steel
CONNECTOR	2 x NL4
PIN CONNECTIONS (INPUT)	18": +1, -1; 14": +2, -2
PIN CONNECTIONS (LINK)	18": +1, -1; 14": +2, -2
FITTINGS	Two skids on base, with mating channels on top M20 top-mounted thread plate for pole mounting Two bar handles on each side Four fittings for optional transit cover
DIMENSIONS (INCL SKIDS)	(W) 650mm x (H) 611mm x (D) 812mm (940mm incl castors) (W) 25.6in x (H) 24.1in x (D) 32.0in (37.0in incl castors)
WEIGHT	75kg (165lbs), 78kg (172 lbs) incl castors





SX218

TYPE	Dual-driver, direct radiating subwoofer
FREQUENCY RESPONSE (1) DRIVER	35Hz - 150Hz ± 3 dB, -10dB @ 30Hz 2 x 18" (460mm)/4" (100mm) voice coil, long excursion, ferrite magnet, waterproof cone
SENSITIVITY (10)	105dB
MAXIMUM SPL(9)	144dB peak
NOMINAL IMPEDANCE	2 x 8 Ohms
CONNECTORS	2 x NL4
FITTINGS	Two skids on base, with mating channels on top 16 x M8 inserts for optional castors 24 x M10 mounting points 4 x bar handles, 2 on each side 4 x fittings for optional transit cover M20 pole mount insert
DIMENSIONS (INCL SKIDS)	(W) 1093mm x (H) 537mm x (D) 792mm (920mm including castors) (W) 43in x (H) 21.1in x (D) 31.2in (36.2in including castors)
WEIGHT	102kg (225lbs) with castors



SXP118

TYPE	Compact, direct radiating powered subwoofer with onboard DSP, networking & Dante
FREQUENCY RESPONSE DRIVER	43Hz - 150Hz ± 3 dB, -10dB @ 30Hz 18" (460mm)/4" (100mm) voice coil, long excursion, ferrite magnet, waterproof cone
INPUT SENSITIVITY	-30dBu for 100dB SPL
MAXIMUM SPL	132dB continuous / 135dB peak
DISPERSION	Omnidirectional / or Cardioid (paired)
AMPLIFIER TYPE	2 channel switch-mode, class D, Bridged Tied
PEAK OUTPUT POWER	2000W total
AC INPUT OPERATING RANGE	85 - 265V ~ AC, 50 - 60Hz
FITTINGS	Two skids on base, with mating channels on top 16 x M8 inserts for optional castors M20 top-mounted thread plate for pole mounting 16 x M10 mounting points 2x Bar handles, 1 on each side 4x fittings for optional transit cover Optional weather protection cowl
ACCESSORIES	Transit Cover
DIMENSIONS (inc. castors)	(W) 600mm x (H) 507mm x (D) 632mm (760mm) (W) 23.62in x (H) 20in x (D) 24.86in (29.90in)
WEIGHT	50kg (110lbs) excluding Transit cover



SXH218

TYPE	Hybrid* horn/reflex subwoofer
FREQUENCY RESPONSE (1) DRIVERS	32Hz - 150Hz ± 3 dB, -10dB @ 27Hz 2 x 18" (460mm)/4.5" (115mm) voice coil, long excursion, neodymium magnet, waterproof cone
RATED POWER (2)	3000W AES, 12000W peak
SENSITIVITY (10)	107dB
MAXIMUM SPL(9)	148dB peak (at 1m half space)
NOMINAL IMPEDANCE	4 Ohms
DISPERSION (-6dB)	Omnidirectional/or Cardioid (paired)
ENCLOSURE	Multi-laminate birch/poplar ply
FINISH	Textured Black Polyurea
PROTECTIVE GRILLE	Black perforated steel
CONNECTORS	2 x NL4
PIN CONNECTIONS	Input: +1/-1, refer to input panel for four-core cable link diagram
FITTINGS	Two skids on base, with mating channels on top Four rear-mounted 100mm (4in) castors 6 x bar handles, 3 on each side 4 x fittings for optional transit cover
DIMENSIONS (INCL SKIDS)	(W) 112mm x (H) 609mm x (D) 1023mm (1151mm incl. castors) (W) 43.8in x (H) 24in x (D) 40.3in (45.3in incl. castors)
WEIGHT	120kg (264lbs), with castors 124kg (273lbs)



SXP218

TYPE	Compact, direct radiating powered subwoofer with onboard DSP, networking & Dante
FREQUENCY RESPONSE DRIVER	35Hz - 150Hz ± 3 dB, -10dB @ 30Hz 18" (460mm)/4" (100mm) voice coil, long excursion, ferrite magnet, waterproof cone
INPUT SENSITIVITY	-30dBu for 100dB SPL
MAXIMUM SPL	140dB continuous / 143dB peak
DISPERSION	Omnidirectional / or Cardioid (paired)
AMPLIFIER TYPE	Two 2 channel switch-mode, class D, Bridged Tied Load
PEAK OUTPUT POWER	4000W
AC INPUT OPERATING RANGE	85 - 265V ~ AC, 50 - 60Hz
FITTINGS	Two skids on base, with mating channels on top 16 x M8 inserts for optional castors 24 x M10 mounting points 4x Bar handles, 2 on each side 4x fittings for optional transit cover Optional weather protection cowl M20 pole mount insert
ACCESSORIES	Transit Cover
DIMENSIONS (inc. castors)	(W) 1085mm x (H) 537mm x (D) 792mm (920mm) (W) 42.72in x (H) 20.87in x (D) 31.16in (36.20in)
WEIGHT	105kg (231lbs) excluding Transit cover



XE Series

Musicians benefit from an onstage environment where they sound great. Hearing their individual performance, as well as the overall sound of the other musicians with clarity, dynamism and presence is essential to a confident performance that unites the band onstage. This is the realm of the stage monitor — the vital bridge between the artist and the audience.

Martin Audio brings engineering innovation to stage monitoring with the XE Series — setting a new reference in sonic excellence and defined coverage. Designed in consultation with leading monitor engineers and combining sleek, low-profile enclosures with unique CDD™ Coaxial Differential Dispersion technology, the XE300 and XE500 deliver perfect monitor sound with a defined coverage pattern that allows the artist freedom of movement, while reducing overlap with adjacent monitors.

The patented Coaxial Differential Dispersion driver combined with a patent pending contour moulded static waveguide allows the artist to stand directly over the monitor or further back, without significant changes in SPL or tonal balance. It produces the optimal coverage pattern over a listening plane at head-height and helps to contain the sound within that region.

Designed as a complete system, select iKON Class D amplifiers maximise the capability of the monitor while ensuring both engineer and artist can be confident they will experience the same high level of consistent performance from an XE monitor anywhere in the world.



XE500

TYPE	Two-way, bi-amp, Coaxial Differential Dispersion stage monitor
FREQUENCY RESPONSE (3)	62Hz-18kHz \pm 3dB -10dB @ 45Hz
DRIVERS	LF: 15" (380mm)/3.5" (89mm) voice coil, dual-gap neodymium motor system HF: 1.4" (35mm) exit/3" (75mm) voice coil, titanium dome compression driver
MAXIMUM SPL (9)	143dB peak
NOMINAL IMPEDANCE	LF: 4 ohms, HF: 8ohms
DISPERSION (-6dB)	60-30° horizontal, 70° vertical
CONNECTORS	4 x NL4 type
FITTINGS	2 x bar handles Protective rubber feet on base and sides Built-in risers 4 x M8 inserts
DIMENSIONS INCL FEET	(W) 641mm x (H) 367mm x (D) 583mm (W) 25.2ins x (H) 14.4ins x (D) 22.9ins
WEIGHT	29kg (63.9lbs)



XE300

TYPE	Two-way, bi-amp/passive, Coaxial Differential Dispersion stage monitor
FREQUENCY RESPONSE (3)	67Hz-18kHz \pm 3dB -10dB @ 55Hz
DRIVERS	LF: 12" (300mm)/3" (75mm) voice coil, dual-gap neodymium motor system HF: 1.4" (35mm) exit/3" (75mm) voice coil, titanium dome compression driver
MAXIMUM SPL (9)	Bi-amp: 140dB peak. Passive: 139dB peak
NOMINAL IMPEDANCE	LF/FR: 6 ohms, HF: 8ohms
DISPERSION (-6dB)	60-30° horizontal, 90° vertical
CONNECTORS	4 x NL4 type
FITTINGS	2 x pocket handles Protective rubber feet on base and sides Built-in risers 4 x M8 inserts
DIMENSION INCL FEET	(W) 556mm x (H) 293mm x (D) 470mm (W) 21.9ins x (H) 11.5ins x (D) 18.5ins
WEIGHT	19kg (41.9lbs)



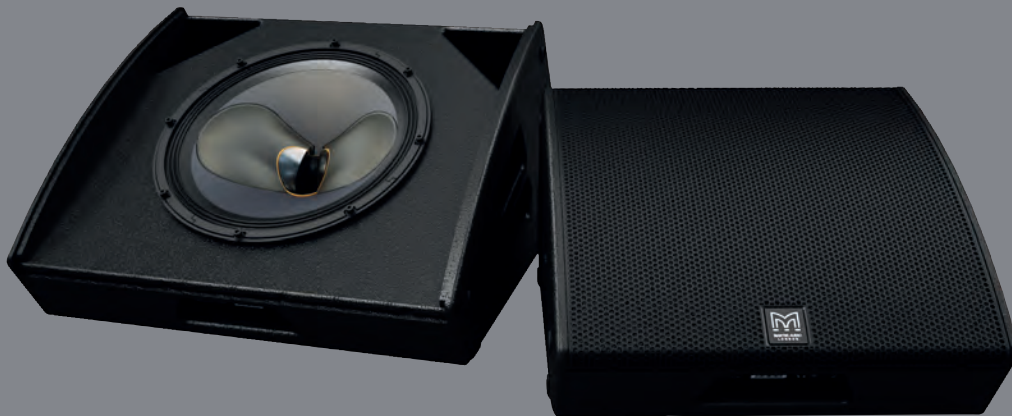
LE Series

The stage monitor plays a key role in creating an onstage environment that connects performers to the audience. Martin Audio's first LE monitor led the way to become the industry standard in the early 1970s, and LE monitors have continued to make their presence felt in the decades since. Complementing Martin Audio's state-of-the-art, high-performance XE Series monitors, the latest LE Series now brings engineering innovation to everyday stage monitoring — delivering exceptional performance and controlled coverage at a price point not previously possible for a truly professional monitor.

Both the LE100 and the LE200 are designed for a wide range of users and applications — from up-and-coming bands and regional rental houses, to corporate AV events, HoW and fixed installations.

With extremely compact enclosures and unique CDD™ Coaxial Differential Dispersion technology, the LE Series monitors deliver cut-through sound with a coverage pattern that allows performers greater freedom of movement compared to conventional monitors. Instead of the typical 'hot-spot', they produce a near-rectangular coverage pattern over a listening plane at head-height — with a wide horizontal coverage close to the monitor that reduces gradually as distance increases to maintain consistent SPL and tonal balance.

Professional and affordable, the latest LE Series puts great sound, optimised coverage and the very latest in innovative monitor technology literally at your feet.



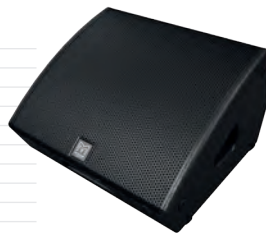
LE200

TYPE	Two-way, bi-amp/passive Coaxial Differential Dispersion stage monitor
FREQUENCY RESPONSE (3)	68Hz-18kHz \pm 3dB -10dB @ 50Hz
DRIVERS	LF: 15" (380mm)/3" (75mm) voice coil, long excursion, shared ferrite motor system with HF HF: 1.4" (32mm) exit/3" (75mm) voice coil, titanium dome compression driver
RATED POWER (2)	400W AES, 1600W peak
SENSITIVITY (3)	LF: 100dB, HF: 103dB Passive: 100dB
MAXIMUM SPL (9)	133dB peak
NOMINAL IMPEDANCE	LF/FR: 8 ohms, HF: 8 ohms
DISPERSION (-6dB)	100°-60° horizontal, 60° vertical
CONNECTORS	4 x NL4 type
FITTINGS	2 x bar handles Protective rubber feet on base and sides 4 x M8 inserts
DIMENSIONS INCL FEET	(W) 616mm x (H) 367mm x (D) 562mm (W) 24.2ins x (H) 14.4ins x (D) 22.1ins
WEIGHT	26kg (57.3lbs)



LE100

TYPE	Two-way passive, Coaxial Differential Dispersion stage monitor
FREQUENCY RESPONSE (3)	78Hz-20kHz \pm 3dB -10dB @ 58Hz
DRIVERS	LF: 12" (300mm)/2.5" (63.5mm) voice coil, long excursion, shared ferrite motor system with HF HF: 1" (25mm) exit/1.7" (44mm) voice coil, polyimide dome compression driver
RATED POWER (2)	300W AES, 1200W peak
SENSITIVITY (3)	97dB
MAXIMUM SPL (9)	129dB peak
NOMINAL IMPEDANCE	8 ohms
DISPERSION (-6dB)	110°-60° horizontal, 60° vertical
CONNECTORS	5 x NL4 type
FITTINGS	2 x pocket handles Protective rubber feet on base and sides 4 x M8 inserts Pole-mount socket
DIMENSIONS INCL FEET	(W) 496mm x (H) 305mm x (D) 472mm (W) 19.5ins x (H) 12.0ins x (D) 18.6ins
WEIGHT	18kg (39.7lbs)



CDD-LIVE!

Until now, most self-powered portable loudspeakers have been underpowered, light-duty systems or very high-end systems out of reach of many users. Now, with the multi-purpose CDD-LIVE! Series, Martin Audio brings everything rental companies, systems integrators and musicians require from a self-powered loudspeaker into sharp focus.

Comprising three full-range models and when complimented by SXP subwoofers, CDD-LIVE! covers practically all professional stand-alone and distributed applications — from sound reinforcement and monitoring for live bands, DJ's and corporate events, to installations in dance clubs, ballrooms, theatres and performing arts centres.

Combining the 'point-source' benefits of coaxial designs with the consistent coverage of Differential Dispersion technology, CDD-LIVE! full-range systems project sound evenly front-to-back while exhibiting wide horizontal coverage close to the speaker — delivering ultimate fidelity and impact to all corners of the audience.



Onboard Class D amplification, DSP and Dante™ Digital Audio networking assure simplicity of stage set-up and efficient installation, while tour-grade enclosures and comprehensive mounting options — including pole mount, wall brackets, yokes and rigging inserts — provide maximum flexibility in deployment.

With sonic consistency across the range, a rectangular coverage footprint and a multitude of deployment options, CDD-LIVE! is truly versatile — the professional self-powered solution that means business.

CDD-LIVE! 'The Sound of Things to Come'

CDD-LIVE 8

TYPE	Ultra-compact, Coaxial Differential Dispersion powered two-way system with onboard DSP, networking & Dante
FREQUENCY RESPONSE DRIVER	70Hz - 20kHz ± 3 dB, -10dB @ 50Hz LF: 8" (200mm) 1/2" (50mm) voice coil, long excursion, shared ferrite motor system with HF HF: 1" (25mm) exit/1.4" (38mm) voice coil, polyimide dome compression driver
INPUT SENSITIVITY	-26dBu for 100dB SPL
MAXIMUM SPL	117dB continuous / 123dB peak
DISPERSION	110° - 80° horizontal, 60° vertical (user-rotatable)
AMPLIFIER TYPE	2 channel switch-mode, class D
PEAK OUTPUT POWER	1000W LF, 300W HF
AC INPUT OPERATING RANGE	85 - 265V ~ AC, 50 - 60Hz
FITTINGS	Top hat for pole mounting 15 x M8 mounting points Single pocket handle Optional weather protection cowl
ACCESSORIES	Transit Cover. Optional wall, yoke and universal brackets
DIMENSIONS	(W) 258mm x (H) 428mm x (D) 254mm (W) 10.16in x (H) 16.85in x (D) 10.00in
WEIGHT	14kg (30.8lbs) excluding Transit cover



CDD-LIVE 15

TYPE	Ultra-compact, Coaxial Differential Dispersion powered two-way system with onboard DSP, networking & Dante
FREQUENCY RESPONSE DRIVER	55Hz - 20kHz ± 3 dB, -10dB @ 45Hz LF: 15" (380mm) 3/4" (75mm) voice coil, long excursion, shared ferrite motor system with HF HF: 1.4" (36mm) exit/3" (75mm) voice coil, titanium dome compression driver
INPUT SENSITIVITY	-30dBu for 100dB SPL
MAXIMUM SPL	126dB continuous / 132dB peak
DISPERSION	100° - 60° horizontal, 60° vertical (user-rotatable)
AMPLIFIER TYPE	2 channel switch-mode, class D, Bridged Tied Load + 1 channel switch-mode, class D
PEAK OUTPUT POWER	2000W LF, 500W HF
AC INPUT OPERATING RANGE	85 - 265V ~ AC, 50 - 60Hz
FITTINGS	Top hat for pole mounting 15 x M8 mounting points Two side pocket handles Optional weather protection cowl
ACCESSORIES	Transit Cover. Optional wall, yoke and universal brackets
DIMENSIONS	(W) 427mm x (H) 696mm x (D) 422mm (W) 16.81in x (H) 27.42in (D) 16.61in
WEIGHT	37kg (81.4lbs) excluding Transit cover



CDD-LIVE 12

TYPE	Ultra-compact, Coaxial Differential Dispersion powered two-way system with onboard DSP, networking & Dante
FREQUENCY RESPONSE DRIVER	62Hz - 20kHz ± 3 dB, -10dB @ 50Hz LF: 12" (300mm) 2.5" (63.5mm) voice coil, long excursion, shared ferrite motor system with HF HF: 1" (25mm) exit/1.7" (44mm) voice coil, polyimide dome compression driver
INPUT SENSITIVITY	-30dBu for 100dB SPL
MAXIMUM SPL	122dB continuous / 128dB peak
DISPERSION	110° - 60° horizontal, 60° vertical (user-rotatable)
AMPLIFIER TYPE	2 channel switch-mode, class D, Bridged Tied Load + 1 channel switch-mode, class D
PEAK OUTPUT POWER	2000W LF, 500W HF
AC INPUT OPERATING RANGE	85 - 265V ~ AC, 50 - 60Hz
FITTINGS	Top hat for pole mounting 15 x M8 mounting points Two side pocket handles Optional weather protection cowl
ACCESSORIES	Transit Cover. Optional wall, yoke and universal brackets
DIMENSIONS	(W) 359mm x (H) 580mm x (D) 373mm (W) 14.13in x (H) 22.83in x (D) 14.69in
WEIGHT	28kg (61.6lbs) excluding Transit cover



BlacklineX **Powered**

The new portable BlacklineX Powered Series integrates all of our engineering expertise into easy-to-use, quick-to-deploy, high-powered loudspeakers that bring professional quality sound, top-flight performance and road-worthy durability into the hands of hard-working industry professionals — from musicians, music bars and mobile DJ's, to corporate AV, House of Worship installations and more.

With optional Bluetooth control, streaming and a built-in three channel mixer, BlacklineX Powered puts Martin Audio signature stadium sound at your fingertips.

Comprising the XP12 and XP15 two-way systems and XP118 subwoofer, BlacklineX Powered incorporates the best-in-class performance, durability and reliability associated with Martin Audio professional systems in a range of affordable, portable self-powered loudspeakers.



XP12

TYPE	Compact self-powered two-way system
FREQUENCY RESPONSE	62Hz ~ 20kHz ±3dB -10dB @ 50Hz
DRIVERS	LF: 12" (300mm)/2.5" (63.5mm) voice coil, ferrite motor system HF: 1" (25mm) exit/1.7" (44mm) voice coil, polyimide dome compression driver
MAXIMUM SPL	122dB continuous, 128dB peak
DISPERSION	80° H x 50° V (user-rotatable)
CROSSOVER	2.3kHz active, 24dB/octave
AMPLIFIER TYPE	2 channel switch-mode, class D
PEAK OUTPUT POWER	1300W total 1000W LF, 300W HF Switch-mode, fixed frequency with PFC
AC INPUT OPERATING RANGE	100-240V ~ AC, 50 - 60Hz
FITTINGS	17 x M8 inserts, pole-mount socket, 2 x pocket handles
DIMENSIONS	(W) 358mm x (H) 574mm x (D) 318mm (W) 14.1in x (H) 22.6in x (D) 12.5in
WEIGHT	18kg (40lbs)



XP118

TYPE	Compact, direct radiating powered subwoofer
FREQUENCY RESPONSE	42Hz ~150Hz ±3dB -10dB @ 38Hz
DRIVER	18" (460mm)/4" (100mm) voice coil, long excursion, ferrite magnet
MAXIMUM SPL	131dB continuous / 137dB peak (half space)
DISPERSION	Omnidirectional
CROSSOVER	100Hz, active
AMPLIFIER TYPE	Class D, Bridged Tied
PEAK OUTPUT POWER	2000W total
AC INPUT OPERATING RANGE	100 ~ 240V ~ AC, 50 - 60Hz
FITTINGS	16 x M10 inserts, pole-mount socket 2 x bar handles, provision for castors
DIMENSIONS	(W) 662mm x (H) 536mm x (D) 640mm (W) 26.1in x (H) 21.1in x (D) 25.2in
WEIGHT	44kg (97lbs)



XP15

TYPE	High output, self-powered two-way system
FREQUENCY RESPONSE	55Hz ~ 20kHz ±3dB -10dB @ 45Hz
DRIVERS	LF: 15" (380mm)/3" (75mm) voice coil ferrite motor system HF: 1" (25mm) exit/1.7" (44mm) voice coil, polyimide dome compression driver
MAXIMUM SPL	125dB continuous / 131dB peak
DISPERSION	80° H x 50° V (user-rotatable)
CROSSOVER	2kHz active, 24dB/octave
AMPLIFIER TYPE	2 channel switch-mode, Class D
PEAK OUTPUT POWER	1300W total 1000W LF, 300W HF
AC INPUT OPERATING RANGE	100-240V ~ AC, 50 - 60Hz
FITTINGS	13 x M8 inserts, pole-mount socket, 2 x pocket handles
DIMENSIONS	(W) 427mm x (H) 690mm x (D) 407mm (W) 16.8in x (H) 27.2 x (D) 16.0in
WEIGHT	26kg (57lbs)



TH Series

TH Series feature standalone loudspeakers engineered to achieve maximum output from relatively compact enclosures. They are very efficient, very loud and capable of delivering thumping full-frequency performance with superb sonic characteristics.

Designed to be used individually, they can offer a competitive alternative to arrayed systems in medium and large-scale clubs and installations.

Comprising three models, TH Series loudspeakers are configured as bi-amped, three-way systems. The three-way design approach delivers very high output and extended frequency response with maximum fidelity, while internal passive crossovers for the mid/high sections make the most effective use of amplifier count.

TH Series loudspeakers deliver the Martin Audio signature sound of warmth, clarity and smooth frequency response with ease. Enhanced extreme low frequency performance can be achieved by supplementing a TH Series loudspeaker with a Martin Audio SX Series subwoofer — creating an impressively powerful and dynamic four-way system.



THV

TYPE	Three-way bi-amp trapezoid Hybrid* fully horn loaded
FREQUENCY RESPONSE (5)	50Hz-18kHz \pm 3dB
DRIVERS	15" (380mm)/4" (100mm) coil bass driver 10" (250mm)/2.5" (63.5mm) coil mid driver 1" (25mm) exit HF compression driver
RATED POWER (2)	LF: 750W AES, 3000W peak MF + HF: 300W AES, 1200W peak
SENSITIVITY (6)	LF: 104dB, MF + HF: 104dB
MAXIMUM SPL (9)	133dB continuous, 139dB peak
NOMINAL IMPEDANCE	LF: 8 ohms, MF + HF: 8 ohms
DISPERSION (-6dB)	70° horizontal, 40° vertical
CROSSOVER	200Hz active, 2kHz passive
ENCLOSURE	250 litre, multi-laminate birch ply
FINISH	Textured black paint
PROTECTIVE GRILLE	Black perforated steel
CONNECTORS	2 x Neutrik NL4
PIN CONNECTIONS	LF+/-: 1+/-, (MF + HF) +/-: 2+/-
FITTINGS	12 x M10 inserts
	4 x 4" (100mm) castors, 4 x pocket handles
DIMENSIONS (inc wheels)	(W) 558mm x (H) 1067mm x (D) 780mm (908mm)
WEIGHT	(W) 22ins x (H) 42ins x (D) 30.7ins (35.7ins) 77.5kg (170.5lbs)



THS

TYPE	Bi-Amp 3-way (Passive MF/HF) Loudspeaker
FREQUENCY RESPONSE (5)	54Hz-18kHz \pm 3dB, -10dB @43Hz with preset
DRIVERS	LF: 15" (380mm) / 4" (100mm) coil neodymium motor MF: 1.4" (25mm) exit / 4" (100mm) coaxial HT polymer ring radiator HF: 1.4" (25mm) exit / 2.5" coaxial HT polymer ring radiator
RATED POWER	LF: 800W AES, 3200W Peak, MF/HF: 110W AES, 440W Peak
SENSITIVITY (6)	LF: 100dB, MF/HF: 109dB
MAXIMUM SPL (9)	129dB continuous, 135dB peak
NOMINAL IMPEDANCE	LF: 8 Ohms, MF/HF: 8 Ohms
DISPERSION (-6dB)	85° horizontal, 50° vertical
CROSSOVER	650Hz/4.8kHz
ENCLOSURE	Birch plywood
FINISH	Textured black finish
PROTECTIVE GRILLE	Black perforated steel
CONNECTORS	NLT4MPXX-BAG speakons (pair)
PIN CONNECTIONS (Input)	LF: 1+ / 1-, MF/HF: 2+/-
PIN CONNECTIONS (Link)	1+ / 1-, 2+ / 2-
FITTINGS	13 x M10 fixings, 4 x M10 Bracket Mounting Points and Two Handle Pockets
DIMENSIONS	710mm (H) x 457mm (W) x 511mm (D) 27.95ins (H) x 17.98ins (W) x 20.11ins (D)
WEIGHT	35.6 kg / 78.48 lbs



THH

TYPE	Three-way bi-amp trapezoid Hybrid* fully horn loaded
FREQUENCY RESPONSE (5)	50Hz-18kHz \pm 3dB
DRIVERS	15" (380mm)/4" (100mm) coil bass driver 10" (250mm)/2.5" (63.5mm) coil mid driver 1" (25mm) exit HF compression driver
RATED POWER (2)	LF: 750W AES, 3000W peak MF + HF: 300W AES, 1200W peak
SENSITIVITY (6)	LF: 104dB, MF + HF: 104dB
MAXIMUM SPL (9)	133dB continuous, 139dB peak
NOMINAL IMPEDANCE	LF: 8 ohms, MF + HF: 8 ohms
DISPERSION (-6dB)	70° horizontal, 40° vertical
CROSSOVER	200Hz active, 2kHz passive
ENCLOSURE	250 litre, multi-laminate birch ply
FINISH	Textured black paint
PROTECTIVE GRILLE	Black perforated steel
CONNECTORS	2 x Neutrik NL4
PIN CONNECTIONS	LF+/-: 1+/-, (MF + HF) +/-: 2+/-
FITTINGS	12 x M10 inserts, 4 x 4" (100mm) castors, 4 x pocket handles
DIMENSIONS (inc wheels)	(W) 1067mm x (H) 558mm x (D) 780mm (908mm)
WEIGHT	(W) 42ins x (H) 22ins x (D) 30.7ins (35.7ins) 77.5kg (170.5lbs)



FlexPoint

With state-of-the-art acoustic design and technical innovations throughout, the FlexPoint Series sets a new benchmark in performance and versatility for compact, standalone loudspeakers. FlexPoint systems deliver the very highest quality sound to match the expectations of prestige venues and top-flight touring artists, while their passive two-way configuration heeds the need to reduce running costs and amplifier count.

Comprising five models, the FlexPoint Series covers a vast range of professional applications—from live sound reinforcement, theatre sound and Corporate AV to distributed sound systems

for installations and immersive environments. From the miniature FP4 to the powerful FP15, FlexPoint loudspeakers are compact and discreet — providing ultimate clarity, detail and coverage at all sound levels without affecting sight lines or detracting from venue architecture.

FlexPoint systems are also designed to integrate perfectly with Wavefront Precision and TORUS arrays where fill and delay loudspeakers are required — ensuring the same superb sonic characteristics and consistent coverage throughout the venue.



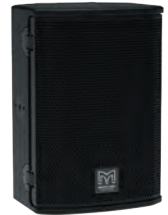
FP4

PRODUCT NAME	FP4
TYPE	Coaxial passive 2-way
CROSSOVER FREQUENCY	2.6kHz
FREQUENCY RESPONSE - 4m (5)	142Hz - 18kHz \pm 3dB, -10dB @103Hz with preset
DRIVERS	LF: 4", 1.25" Voice coil, Ferrite Motor HF: 0.7" exit, 1" Voice coil, Coaxial HT polymer dome compression driver
SENSITIVITY (4V 1m free-field)	84dB
NOMINAL IMPEDANCE	16 Ohms
RATED POWER	60W AES, 240W peak
MAXIMUM SPL	102dB Cont, 108dB Peak (6dB)
DISPERSION (-6dB)	110° conical
CONNECTORS	NL4MPXX speakons (pair), Phoenix terminal block 1725302
PIN CONNECTIONS (INPUT)	1+ / 1-
PIN CONNECTIONS (LINK)	1+/- and 2+/-
FITTINGS	4 x M6 inserts, 1 x 3/8" (mic stand) fixing point
DIMENSIONS	(W) 130mm, (H) 130mm, (D) 126mm (W) 5.1ins, (H) 5.1ins, (D) 5.0ins
WEIGHT	1.9kg (4.2lbs)



FP6

PRODUCT NAME	FP6
TYPE	Coaxial passive 2-way
CROSSOVER FREQUENCY	2.3kHz
FREQUENCY RESPONSE - 4m (5)	73Hz - 20kHz \pm 3dB, -10dB @57Hz with preset
DRIVERS	LF: 6", 1.75" Voice coil, Neodymium Motor with flux stabilising rings HF: 0.7" exit, 1.4" Voice coil, Coaxial HT polymer dome compression driver
SENSITIVITY (4V 1m free-field)	91dB
NOMINAL IMPEDANCE	16 Ohms
RATED POWER	150W AES, 600W peak
MAXIMUM SPL	113dB Cont, 119dB Peak (6dB)
DISPERSION (-6dB)	100° H, 80° V
CONNECTORS	NLT4MPXX-BAG speakons (pair)
PIN CONNECTIONS (INPUT)	1+ / 1-
PIN CONNECTIONS (LINK)	1+/- and 2+/-
FITTINGS	4 x M10, 15 x M6 fixing points, 1 x 3/8" (mic stand) fixing point
DIMENSIONS	(W) 321mm, (H) 220mm, (D) 197mm (W) 12.6ins, (H) 8.7ins, (D) 7.8ins
WEIGHT	5.5kg (12.1lbs)



FP8

PRODUCT NAME	FP8
TYPE	Coaxial passive 2-way
CROSSOVER FREQUENCY	2.0kHz
FREQUENCY RESPONSE - 4m (5)	63Hz - 18kHz \pm 3dB, -10dB @50Hz with preset
DRIVERS	LF: 8", 2" Voice coil, Neodymium Motor with flux stabilising rings HF: 1" exit, 1.7" Voice coil, Coaxial HT polymer dome compression driver
SENSITIVITY (2.83V 1m free-field)	94dB
NOMINAL IMPEDANCE	8 Ohms
RATED POWER	250W AES, 1000W peak
MAXIMUM SPL	118dB Cont, 124dB Peak (6dB)
DISPERSION (-6dB)	90° H, 70° V
CONNECTORS	NLT4MPXX-BAG speakons (pair)
PIN CONNECTIONS (INPUT)	1+ / 1-
PIN CONNECTIONS (LINK)	1+/- and 2+/-
FITTINGS	4 x M10, 15 x M6 fixing points, dual pole-mount socket, 2 x handle pockets
DIMENSIONS	(W) 376mm, (H) 280mm, (D) 265mm (W) 14.8ins, (H) 11.0ins, (D) 10.4ins
WEIGHT	9.3kg (20.5lbs)



Captive release clamps



Rotate driver through 90°

FP12

PRODUCT NAME	FP12
TYPE	Coaxial passive 2-way
CROSSOVER FREQUENCY	1.5kHz
FREQUENCY RESPONSE - 4π (5)	55Hz - 20kHz ± 3dB, -10dB @44Hz with preset
DRIVERS	LF: 12", 3" Voice coil, Neodymium Motor with flux stabilising rings HF: 1.4" exit, 3" Voice coil, Coaxial titanium dome compression driver
SENSITIVITY (2.83V 1m free-field)	97dB
NOMINAL IMPEDANCE	8 Ohms
RATED POWER	350W AES, 1400W peak
MAXIMUM SPL	122dB Cont, 128dB Peak (6dB)
DISPERSION (-6dB)	90° H, 60° V
CONNECTORS	NLT4MPXX-BAG speakons (pair)
PIN CONNECTIONS (INPUT)	1+ / 1-
PIN CONNECTIONS (LINK)	1+/- and 2+/-
FITTINGS	4 x M10, 17 x M8 fixing points, dual pole-mount socket, 2 x handle pockets
DIMENSIONS	(W) 521mm, (H) 390mm, (D) 346mm (W) 20.5ins, (H) 15.4ins, (D) 13.6ins
WEIGHT	17.5kg (38.6lbs)



FP15

PRODUCT NAME	FP15
TYPE	Coaxial passive 2-way
CROSSOVER FREQUENCY	1.1kHz
FREQUENCY RESPONSE - 4π (5)	50Hz - 20kHz ± 3dB, -10dB @39Hz with preset
DRIVERS	LF: 15", 3.5" Voice coil, Neodymium Motor with flux stabilising rings HF: 1.4" exit, 3" Voice coil, Coaxial titanium dome compression driver
SENSITIVITY (2.83V 1m free-field)	99dB
NOMINAL IMPEDANCE	8 Ohms
RATED POWER	500W AES, 2000W peak
MAXIMUM SPL	126dB Cont, 132dB Peak (6dB)
DISPERSION (-6dB)	80° H, 50° V
CONNECTORS	NLT4MPXX-BAG speakons (pair)
PIN CONNECTIONS (INPUT)	1+ / 1-
PIN CONNECTIONS (LINK)	1+/- and 2+/-
FITTINGS	4 x M10, 17 x M8 fixing points, dual pole-mount socket, 2 x handle pockets
DIMENSIONS	(W) 601mm, (H) 460mm, (D) 420mm (W) 23.7ins, (H) 18.1ins, (D) 16.5ins
WEIGHT	27.4kg (60.4lbs)





Flexible deployment options

BlacklineX Series

With BlacklineX, Martin Audio's R&D team has engineered a classic suite of passive loudspeakers for the modern era.

Delivering our signature sound of warmth, nuance and clarity at a price point not previously possible, BlacklineX is a clean, smart design with no-compromise between the needs of installation and portability. Applications range from portable sound reinforcement and stage monitoring for live bands, DJ's and corporate events, to installations in nightclubs, bars, commercial spaces and HoW [House of Worship].

Comprising four two-way systems — from the ultra-compact X8 to the powerful X15 — and three subwoofers, including an unobtrusive slimline model, the multi-purpose BlacklineX Series raises the performance of loudspeaker systems in its class to a new level.

BlacklineX can also be supplemented with the Blackline+ high power performance loudspeakers and subwoofer, ideally suited for thumping club performance and large scale installations.



X8



TYPE	Ultra-compact, passive two-way system
FREQUENCY RESPONSE (5)	70Hz-20kHz \pm 3dB -10dB @ 60Hz
DRIVERS	LF: 8" (200mm)/2" (50mm) voice coil, ferrite motor system HF: 1" (25mm) exit/1" (25mm) voice coil, polyester dome compression driver
RATED POWER (2)	200W AES, 800W peak
SENSITIVITY (8)	92dB
MAXIMUM SPL (9)	115dB continuous, 121dB peak
NOMINAL IMPEDANCE	8 ohms
DISPERSION (-6dB)	90° H x 50° V (user-rotatable)
CONNECTORS	2 x NL4 type
FITTINGS	13 x M8, 6 x M6 inserts, pole-mount socket, 1 x pocket handle
DIMENSIONS	(W) 257mm x (H) 422mm x (D) 243mm (W) 10.1ins x (H) 16.6ins x (D) 9.6ins
WEIGHT	8kg (17.6lbs)

X12



TYPE	Compact, passive two-way system
FREQUENCY RESPONSE (5)	62Hz-20kHz \pm 3dB -10dB @ 50Hz
DRIVERS	LF: 12" (300mm)/2.5" (63.5mm) voice coil, ferrite motor system HF: 1" (25mm) exit/1.7" (44mm) voice coil, polyimide dome compression driver
RATED POWER (2)	300W AES, 1200W peak
SENSITIVITY (8)	97dB
MAXIMUM SPL (9)	122dB continuous, 128dB peak
NOMINAL IMPEDANCE	8 ohms
CONNECTORS	2 x NL4 type
FITTINGS	20 x M8 inserts, pole-mount socket, 1 x bar handle
DIMENSIONS	(W) 358mm x (H) 574mm x (D) 337mm (W) 14.1ins x (H) 22.6ins x (D) 13.7ins
WEIGHT	17kg (37.5lbs)

X10



TYPE	Compact, passive two-way system
FREQUENCY RESPONSE (5)	65Hz-20kHz \pm 3dB -10dB @ 55Hz
DRIVERS	LF: 10" (250mm)/2.5" (63.5mm) voice coil, ferrite motor system HF: 1" (25mm) exit/1.4" (35mm) voice coil, polyimide dome compression driver
RATED POWER (2)	250W AES, 1000W peak
SENSITIVITY (8)	94dB
MAXIMUM SPL (9)	118dB continuous, 124dB peak
NOMINAL IMPEDANCE	8 ohms
CONNECTORS	2 x NL4 type
FITTINGS	19 x M8 inserts, pole-mount socket, 1 x bar handle
DIMENSIONS	(W) 324mm x (H) 522mm x (D) 289mm (W) 12.8ins x (H) 20.6ins x (D) 11.4ins
WEIGHT	14kg (30.9lbs)

X15



TYPE	High-power, passive two-way system
FREQUENCY RESPONSE (5)	55Hz-20kHz \pm 3dB -10dB @ 45Hz
DRIVERS	LF: 15" (380mm)/3" (75mm) voice coil, ferrite motor system HF: 1" (25mm) exit/1.7" (44mm) voice coil, polyimide dome compression driver
RATED POWER (2)	400W AES, 1600W peak
SENSITIVITY (8)	99dB
MAXIMUM SPL (9)	125dB continuous, 131dB peak
NOMINAL IMPEDANCE	8 ohms
CONNECTORS	2 x NL4 type
FITTINGS	19 x M8 inserts, pole-mount socket, 2 x bar handles
DIMENSIONS	(W) 427mm x (H) 690mm x (D) 419mm (W) 16.8ins x (H) 27.2ins x (D) 16.5ins
WEIGHT	24kg (52.9lbs)

X115



TYPE	Compact, direct radiating subwoofer
FREQUENCY RESPONSE (1)	45Hz-150Hz \pm 3dB -10dB @ 40Hz
DRIVER	15" (380mm)/3" (75mm) voice coil, long excursion, ferrite magnet
RATED POWER (2)	500W AES, 2000W peak
SENSITIVITY (10)	102dB
MAXIMUM SPL (9)	129dB continuous, 135dB peak (half space)
NOMINAL IMPEDANCE	8 ohms
CONNECTORS	3 x NL4 type
FITTINGS	16 x M10 inserts, pole-mount socket 2 x bar handles, provision for castors
DIMENSIONS (INCL. FEET)	(W) 465mm x (H) 590mm x (D) 565mm (W) 18.3ins x (H) 23.2ins x (D) 22.2ins
WEIGHT	27kg (59.5lbs)

X218



TYPE	Dual-driver, direct radiating subwoofer
FREQUENCY RESPONSE (1)	42Hz-200Hz \pm 3dB -10dB @ 33Hz
DRIVER	18" (460mm)/4" (100mm) voice coil, long excursion, ferrite magnet
RATED POWER (2)	1600W AES, 6400W peak
SENSITIVITY (10)	106dB
MAXIMUM SPL (9)	141dB peak (half space)
NOMINAL IMPEDANCE	4 ohms
DISPERSION (-6dB)	Omnidirectional
CROSSOVER	80-120Hz active
CONNECTORS	2 x NL4 type
PIN CONNECTIONS (INPUT)	1+ 1- Link Through 2+ 2-
PIN CONNECTIONS (LINK)	1+ 1- Link Through 2+ 2-
FITTINGS	12 x M10 inserts, pole-mount socket 2 x bar handles, 4 x pocket handles, provision for castors
DIMENSIONS (INCL. FEET)	(W) 1049mm x (H) 587mm x (D) 727mm (W) 41.3ins x (H) 23.1ins x (D) 28.6ins
WEIGHT	88kg (194lbs)

X118



TYPE	Compact, direct radiating subwoofer
FREQUENCY RESPONSE (1)	42Hz-150Hz \pm 3dB -10dB @ 36Hz
DRIVER	18" (460mm)/4" (100mm) voice coil, long excursion, ferrite magnet
RATED POWER (2)	800W AES, 3200W peak
SENSITIVITY (10)	104dB
MAXIMUM SPL (9)	130dB continuous, 136dB peak (half space)
NOMINAL IMPEDANCE	8 ohms
CONNECTORS	3 x NL4 type
FITTINGS	16 x M10 inserts, pole-mount socket 2 x bar handles, provision for castors
DIMENSIONS (INCL. FEET)	(W) 530mm x (H) 669mm x (D) 640mm (W) 20.9ins x (H) 26.3ins x (D) 25.2ins
WEIGHT	42kg (92.6lbs)





CDD Series

Martin Audio brings engineering innovation to installed sound with the all-new CDD™ Series — combining distinctive curved enclosures with unique Coaxial Differential Dispersion™ technology to deliver class-leading performance, fidelity and coverage consistency to venues that demand the ultimate in cutting-edge technology and style.

Whether it's a bar, an AV installation, a church or a prestige nightclub — the CDD Series has it covered. CDD is the one-stop solution; six two-way full-range coaxial systems — from the micro CDD5 to the powerful CDD15, complemented by high-performance subwoofers — cover practically all install applications.

The CDD Series has the audience covered too. Coaxial Differential Dispersion technology delivers more consistent

audience coverage than systems with X° x Y° horns — projecting more output to the rear of the audience to distribute sound evenly front-to-back, while having wide horizontal coverage close-up.

Visually-appealing enclosure design is a signature of the CDD Series. The full-range enclosures can be used in either horizontal or vertical orientation, with rotation of the coaxial driver easily accomplished by removing the screw-free, protective grille. The curved shape of each full-range enclosure allows it to be discreetly mounted close to a wall and threaded inserts are provided for eyebolt suspension of most models.

The CDD Series — the shape of things to come.



CDD5



TYPE	Ultra-compact, Coaxial Differential Dispersion passive two-way system
FREQUENCY RESPONSE (5)	100Hz-20kHz \pm 3dB, -10dB @ 70Hz
COAXIAL DRIVER	LF: 5.25" (130mm)/1.25" (32mm) voice coil, long excursion, ferrite motor system HF: 0.75" (19mm) voice coil, fabric dome with neodymium motor system
RATED POWER (2)	100W AES, 400W peak
SENSITIVITY (8)	90dB
MAXIMUM SPL (9)	110dB continuous, 116dB peak
NOMINAL IMPEDANCE	8 ohms
DISPERSION (-6dB)	120°-90° horizontal, 80° vertical (user-rotatable)
CONNECTORS	Low profile 13A push-lock
FITTINGS	6 x M5 inserts for wall/ceiling brackets
DIMENSIONS	(W) 160mm x (H) 230mm x (D) 149mm (W) 6.3ins x (H) 9.1ins x (D) 5.9ins
WEIGHT	3kg (6.6lbs)

CDD5 is supplied with wall mount tilt/pan bracket

CDD6



TYPE	Ultra-compact, Coaxial Differential Dispersion passive two-way system
FREQUENCY RESPONSE (5)	80Hz-20kHz \pm 3dB, -10dB @ 70Hz
COAXIAL DRIVER	LF: 6.5" (165mm)/1.5" (38mm) voice coil, long excursion, ferrite motor system HF: 1" (25mm) voice coil, fabric dome with neodymium motor system
RATED POWER (2)	150W AES, 600W peak
SENSITIVITY (8)	91dB
MAXIMUM SPL (9)	113dB continuous, 119dB peak
NOMINAL IMPEDANCE	8 ohms
DISPERSION (-6dB)	110°-80° horizontal, 80° vertical (user-rotatable)
CONNECTORS	Low profile 13A push-lock
FITTINGS	4 x M6 inserts for wall/ceiling brackets
DIMENSIONS	(W) 210mm x (H) 325mm x (D) 210mm (W) 8.3ins x (H) 12.8ins x (D) 8.3ins
WEIGHT	5.5kg (12.1lbs)

CDD8



TYPE	Ultra-compact, Coaxial Differential Dispersion passive two-way system
FREQUENCY RESPONSE (5)	70Hz-20kHz \pm 3dB, -10dB @ 55Hz
COAXIAL DRIVER	LF: 8" (200mm)/2" (50mm) voice coil, long excursion, shared ferrite motor system with HF HF: 1" (25mm) exit/1.4" (38mm) voice coil, polyimide dome compression driver
RATED POWER (2)	200W AES, 800W peak
SENSITIVITY (8)	94dB
MAXIMUM SPL (9)	117dB continuous, 123dB peak
NOMINAL IMPEDANCE	8 ohms
DISPERSION (-6dB)	110°-80° horizontal, 60° vertical (user-rotatable)
CONNECTORS	Low profile 13A push-lock
FITTINGS	6 x M6 inserts for wall/ceiling brackets
DIMENSIONS	(W) 256mm x (H) 410mm x (D) 252mm (W) 10.1ins x (H) 16.1ins x (D) 9.9ins
WEIGHT	9.5kg (21lbs)

CDD8-TX



TYPE	Ultra-compact, Coaxial Differential Dispersion passive two-way system
FREQUENCY RESPONSE (5)	70Hz-20kHz \pm 3dB, -10dB @ 55Hz
COAXIAL DRIVER	LF: 8" (200mm)/2" (50mm) voice coil, long excursion, shared ferrite motor system with HF HF: 1" (25mm) exit/1.4" (38mm) voice coil, polyimide dome compression driver
RATED POWER (2)	200W AES, 800W peak
TRANSFORMER SETTINGS	100V/70V line: 120W, 60W, 30W, 15W
SENSITIVITY (8)	94dB
MAXIMUM SPL (9)	117dB continuous, 123dB peak
NOMINAL IMPEDANCE	8 ohms
DISPERSION (-6dB)	110°-80° horizontal, 60° vertical (user-rotatable)
CONNECTORS	Low profile 13A push-lock
FITTINGS	6 x M6 inserts for wall/ceiling brackets
DIMENSIONS	(W) 256mm x (H) 410mm x (D) 252mm (W) 10.1ins x (H) 16.1ins x (D) 9.9ins
WEIGHT	11.1kg (24.53lbs)

CDD10



TYPE	Compact, Coaxial Differential Dispersion passive two-way system
FREQUENCY RESPONSE (2)	65Hz-20kHz \pm 3dB, -10dB @ 55Hz
COAXIAL DRIVER	LF: 10" (250mm)/2.5" (63.5mm) voice coil, long excursion, shared ferrite motor system with HF HF: 1" (25mm) exit/1.4" (38mm) voice coil, polyimide dome compression driver
RATED POWER (2)	250W AES, 1000W peak
SENSITIVITY (8)	96dB
MAXIMUM SPL (9)	120dB continuous, 126dB peak
NOMINAL IMPEDANCE	8 ohms
DISPERSION (-6dB)	110°-75° horizontal, 60° vertical (user-rotatable)
CONNECTORS	Low profile 20A push-lock
FITTINGS	6 x M8 inserts for wall/ceiling brackets, 10 x M8 fly points
DIMENSIONS	(W) 323mm x (H) 513mm x (D) 310mm (W) 12.7ins x (H) 20.2ins x (D) 12.2ins
WEIGHT	15.3kg (33.7lbs)

CDD10-TX



TYPE	Compact, Coaxial Differential Dispersion passive two-way system
FREQUENCY RESPONSE (2)	65Hz-20kHz \pm 3dB, -10dB @ 55Hz
COAXIAL DRIVER	LF: 10" (250mm)/2.5" (63.5mm) voice coil, long excursion, shared ferrite motor system with HF HF: 1" (25mm) exit/1.4" (38mm) voice coil, polyimide dome compression driver
RATED POWER (2)	250W AES, 1000W peak
TRANSFORMER SETTINGS	100V/70V line: 120W, 60W, 30W, 15W
SENSITIVITY (8)	96dB
MAXIMUM SPL (9)	120dB continuous, 126dB peak
NOMINAL IMPEDANCE	8 ohms
DISPERSION (-6dB)	110°-75° horizontal, 60° vertical (user-rotatable)
CONNECTORS	Low profile 20A push-lock
FITTINGS	6 x M8 inserts for wall/ceiling brackets, 10 x M8 fly points
DIMENSIONS	(W) 323mm x (H) 513mm x (D) 310mm (W) 12.7ins x (H) 20.2ins x (D) 12.2ins
WEIGHT	16.9kg (37.23lbs)

CDD12



TYPE	Compact, high-output, Coaxial Differential Dispersion passive two-way system
FREQUENCY RESPONSE (5)	62Hz-20kHz \pm 3dB, -10dB @ 50Hz
COAXIAL DRIVER	LF: 12" (300mm)/2.5" (63.5mm) voice coil, long excursion, shared ferrite motor system with HF HF: 1" (25mm) exit/1.7" (44mm) voice coil, polyimide dome compression driver
RATED POWER (2)	300W AES, 1200W peak
SENSITIVITY (8)	97dB
MAXIMUM SPL (9)	122dB continuous, 128dB peak
NOMINAL IMPEDANCE	8 ohms
DISPERSION (-6dB)	110°-60° horizontal, 60° vertical (user-rotatable)
CONNECTORS	Low profile 20A push-lock
FITTINGS	6 x M8 inserts for wall/ceiling brackets, 10 x M8 fly points
DIMENSIONS	(W) 360mm x (H) 560mm x (D) 350mm (W) 14.2ins x (H) 22.05ins x (D) 13.8ins
WEIGHT	19kg (41.89lbs)

CDD15



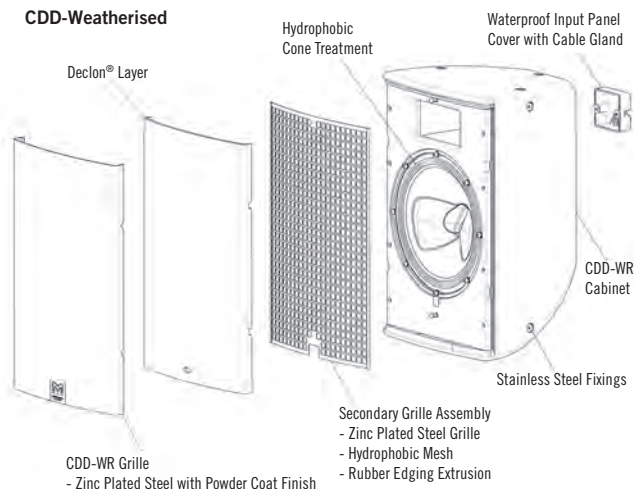
TYPE	High-output, Coaxial Differential Dispersion passive two-way system
FREQUENCY RESPONSE (5)	55Hz-18kHz \pm 3dB, -10dB @ 45Hz
COAXIAL DRIVER	LF: 15" (380mm)/3" (75mm) voice coil, long excursion, shared ferrite motor system with HF HF: 1.4" (36mm) exit/3" (75mm) voice coil, titanium dome compression driver
RATED POWER (2)	400W AES, 1600W peak
SENSITIVITY (8)	100dB
MAXIMUM SPL (9)	126dB continuous, 132dB peak
NOMINAL IMPEDANCE	8 ohms
DISPERSION (-6dB)	100°-60° horizontal, 60° vertical (user-rotatable)
CONNECTORS	Low profile 20A push-lock
FITTINGS	10 x M8 fly points
DIMENSIONS	(W) 432mm x (H) 685mm x (D) 413mm (W) 17.0ins x (H) 26.97ins x (D) 16.26ins
WEIGHT	26kg (57.32lbs)



CDD Weatherised and Marine Editions

The CDD Series in black or white is also available in weather-resistant form. Like many systems on the market, CDD-WR loudspeakers and CSX-WR subwoofers are designed for outdoor operation where it will be subject to changing environmental conditions, but sheltered from direct exposure to the elements. Weatherised mounting brackets are also available.

CDD is also available to custom order as a Marine variant, ideally suited to cruise ships and seaside resort applications. It takes the weatherised cabinet and upgrades both the grille and all metal work to stainless steel 316L.



CDD5TX-WR

WITH LINE TRANSFORMER

TYPE	Ultra-compact, Coaxial Differential Dispersion passive two-way system
FREQUENCY RESPONSE (5) COAXIAL DRIVER	100Hz-20kHz \pm 3dB, -10dB @ 70Hz LF: 5.25" (130mm)/1.25" (32mm) voice coil, long excursion, ferrite motor system HF: 0.75" (19mm) voice coil, fabric dome with neodymium motor system
RATED POWER (2)	100W AES, 400W peak
SENSITIVITY (8)	90dB
MAXIMUM SPL (9)	110dB continuous, 116dB peak
NOMINAL IMPEDANCE	8 ohms
DISPERSION (-6dB)	120°-90° horizontal, 80° vertical (user-rotatable)
PROTECTIVE GRILLE	Zinc plated mild steel with powder coated finish and weatherised backing
ENVIRONMENTAL	Rated at IP54
CONNECTORS	Low profile 13A push-lock, weatherproof input panel cover with dual cable glands
FITTINGS	6 x M5 inserts for wall/ceiling brackets
DIMENSIONS	(W) 160mm x (H) 230mm x (D) 149mm (W) 6.3ins x (H) 9.1ins x (D) 5.9ins
WEIGHT	3.4kg (7.5lbs)

CDD5 is supplied with wall mount tilt/pan bracket



CDD8-WR

TYPE	Ultra-compact, Coaxial Differential Dispersion passive two-way system
FREQUENCY RESPONSE (5) COAXIAL DRIVER	70Hz-20kHz \pm 3dB, -10dB @ 55Hz LF: 8" (200mm)/2" (50mm) voice coil, long excursion, shared ferrite motor system with HF HF: 1" (25mm) exit/1.4" (38mm) voice coil, polyimide dome compression driver
RATED POWER (2)	200W AES, 800W peak
SENSITIVITY (8)	94dB
MAXIMUM SPL (9)	117dB continuous, 123dB peak
NOMINAL IMPEDANCE	8 ohms
DISPERSION (-6dB)	110°-80° horizontal, 60° vertical (user-rotatable)
PROTECTIVE GRILLE	Zinc plated mild steel with powder coated finish and weatherised backing
ENVIRONMENTAL	Rated at IP54
CONNECTORS	Low profile 13A push-lock, weatherproof input panel cover with cable gland
FITTINGS	6 x M6 inserts for wall/ceiling brackets
DIMENSIONS	(W) 256mm x (H) 410mm x (D) 252mm (W) 10.1ins x (H) 16.1ins x (D) 9.9ins
WEIGHT	9.8kg (21.6lbs)



CDD6TX-WR

WITH LINE TRANSFORMER

TYPE	Ultra-compact, Coaxial Differential Dispersion passive two-way system
FREQUENCY RESPONSE (5) COAXIAL DRIVER	80Hz-20kHz \pm 3dB, -10dB @ 70Hz LF: 6.5" (165mm)/1.5" (38mm) voice coil, long excursion, ferrite motor system HF: 1" (25mm) voice coil, fabric dome with neodymium motor system
RATED POWER (2)	150W AES, 600W peak
SENSITIVITY (8)	91dB
MAXIMUM SPL (9)	113dB continuous, 119dB peak
NOMINAL IMPEDANCE	8 ohms
DISPERSION (-6dB)	110°-80° horizontal, 80° vertical (user-rotatable)
PROTECTIVE GRILLE	Zinc plated mild steel with powder coated finish and weatherised backing
ENVIRONMENTAL	Rated at IP54
CONNECTORS	Low profile 13A push-lock, weatherproof input panel cover with dual cable glands
FITTINGS	4 x M6 inserts for wall/ceiling brackets
DIMENSIONS	(W) 210mm x (H) 325mm x (D) 210mm (W) 8.3ins x (H) 12.8ins x (D) 8.3ins
WEIGHT	6.5kg (14.3lbs)



CDD8TX-WR

TYPE	Ultra-compact, Coaxial Differential Dispersion passive two-way system
FREQUENCY RESPONSE (5) COAXIAL DRIVER	70Hz-20kHz \pm 3dB, -10dB @ 55Hz LF: 8" (200mm)/2" (50mm) voice coil, long excursion, shared ferrite motor system with HF HF: 1" (25mm) exit/1.4" (38mm) voice coil, polyimide dome compression driver
RATED POWER (2)	200W AES, 800W peak
TRANSFORMER SETTINGS	100V/70V line: 120W, 60W, 30W, 15W
SENSITIVITY (8)	94dB
MAXIMUM SPL (9)	117dB continuous, 123dB peak
NOMINAL IMPEDANCE	8 ohms
DISPERSION (-6dB)	110°-80° horizontal, 60° vertical (user-rotatable)
PROTECTIVE GRILLE	Zinc plated mild steel with powder coated finish and weatherised backing
ENVIRONMENTAL	Rated at IP54
CONNECTORS	Low profile 13A push-lock, weatherproof input panel cover with cable gland
FITTINGS	6 x M6 inserts for wall/ceiling brackets
DIMENSIONS	(W) 256mm x (H) 410mm x (D) 252mm (W) 10.1ins x (H) 16.1ins x (D) 9.9ins
WEIGHT	11.4kg (25.13lbs)



CDD10-WR

TYPE	Compact, Coaxial Differential Dispersion passive two-way system
FREQUENCY RESPONSE (2)	65Hz-20kHz \pm 3dB, -10dB @ 55Hz
COAXIAL DRIVER	LF: 10" (250mm)/2.5" (63.5mm) voice coil, long excursion, shared ferrite motor system with HF HF: 1" (25mm) exit/1.4" (38mm) voice coil, polyimide dome compression driver
RATED POWER (2)	250W AES, 1000W peak
SENSITIVITY (8)	96dB
MAXIMUM SPL (9)	120dB continuous, 126dB peak
NOMINAL IMPEDANCE	8 ohms
DISPERSION (-6dB)	110°-75° horizontal, 60° vertical (user-rotatable)
PROTECTIVE GRILLE	Zinc plated mild steel with powder coated finish and weatherised backing
ENVIRONMENTAL CONNECTORS	Rated at IP54 Low profile 20A push-lock, weatherproof input panel cover with cable gland
FITTINGS	6 x M8 inserts for wall/ceiling brackets, 10 x M8 fly points
DIMENSIONS	(W) 323mm x (H) 513mm x (D) 310mm (W) 12.7ins x (H) 20.2ins x (D) 12.2ins
WEIGHT	15.5kg (34.2lbs)



CDD12-WR

TYPE	Compact, high-output, Coaxial Differential Dispersion passive two-way system
FREQUENCY RESPONSE (5)	62Hz-20kHz \pm 3dB, -10dB @ 50Hz
COAXIAL DRIVER	LF: 12" (300mm)/2.5" (63.5mm) voice coil, long excursion, shared ferrite motor system with HF HF: 1" (25mm) exit/1.7" (44mm) voice coil, polyimide dome compression driver
RATED POWER (2)	300W AES, 1200W peak
SENSITIVITY (8)	97dB
MAXIMUM SPL (9)	122dB continuous, 128dB peak
NOMINAL IMPEDANCE	8 ohms
DISPERSION (-6dB)	110°-60° horizontal, 60° vertical (user-rotatable)
PROTECTIVE GRILLE	Zinc plated mild steel with powder coated finish and weatherised backing
ENVIRONMENTAL CONNECTORS	Rated at IP54 Low profile 20A push-lock, weatherproof input panel cover with cable gland
FITTINGS	6 x M8 inserts for wall/ceiling brackets, 10 x M8 fly points
DIMENSIONS	(W) 360mm x (H) 571mm x (D) 350mm (W) 14.2ins x (H) 22.5ins x (D) 13.8ins
WEIGHT	19.8kg (43.6lbs)



CDD10TX-WR

TYPE	Compact, Coaxial Differential Dispersion passive two-way system
FREQUENCY RESPONSE (2)	65Hz-20kHz \pm 3dB, -10dB @ 55Hz
COAXIAL DRIVER	LF: 10" (250mm)/2.5" (63.5mm) voice coil, long excursion, shared ferrite motor system with HF HF: 1" (25mm) exit/1.4" (38mm) voice coil, polyimide dome compression driver
RATED POWER (2)	250W AES, 1000W peak
TRANSFORMER SETTINGS	100V/70V line: 120W, 60W, 30W, 15W
SENSITIVITY (8)	96dB
MAXIMUM SPL (9)	120dB continuous, 126dB peak
NOMINAL IMPEDANCE	8 ohms
DISPERSION (-6dB)	110°-75° horizontal, 60° vertical (user-rotatable)
PROTECTIVE GRILLE	Zinc plated mild steel with powder coated finish and weatherised backing
ENVIRONMENTAL CONNECTORS	Rated at IP54 Low profile 20A push-lock, weatherproof input panel cover with cable gland
FITTINGS	6 x M8 inserts for wall/ceiling brackets, 10 x M8 fly points
DIMENSIONS	(W) 323mm x (H) 513mm x (D) 310mm (W) 12.7ins x (H) 20.2ins x (D) 12.2ins
WEIGHT	17.1kg (37.7lbs)



CDD15-WR

TYPE	High-output, Coaxial Differential Dispersion passive two-way system
FREQUENCY RESPONSE (5)	55Hz-18kHz \pm 3dB, -10dB @ 45Hz
COAXIAL DRIVER	LF: 15" (380mm)/3" (75mm) voice coil, long excursion, shared ferrite motor system with HF HF: 1.4" (36mm) exit/3" (75mm) voice coil, titanium dome compression driver
RATED POWER (2)	400W AES, 1600W peak
SENSITIVITY (8)	100dB
MAXIMUM SPL (9)	126dB continuous, 132dB peak
NOMINAL IMPEDANCE	8 ohms
DISPERSION (-6dB)	100°-60° horizontal, 60° vertical (user-rotatable)
PROTECTIVE GRILLE	Zinc plated mild steel with powder coated finish and weatherised backing
ENVIRONMENTAL CONNECTORS	Rated at IP54 Low profile 20A push-lock, weatherproof input panel cover with cable gland
FITTINGS	10 x M8 fly points
DIMENSIONS	(W) 429mm x (H) 691mm x (D) 413mm (W) 16.9ins x (H) 27.2ins x (D) 16.3ins
WEIGHT	28.3kg (62.4lbs)





Lee Valley White Water Centre, UK

ADORN Series

Martin Audio ADORN on-wall and ceiling loudspeakers bring class-leading performance, reliability and cost competitiveness to a wide range of commercial sound installations — from retail outlets, bars and restaurants to corporate offices.

Aesthetic Enclosures

ADORN full-range on-wall enclosures are visually unobtrusive with smooth lines. Available in black or white as standard, they can be readily painted to match any interior décor and architectural environment.

ADORN in-ceiling and pendant speakers feature a bezel-less grille for a clean look and a bayonet fitting which is easy to remove without the use of tools. The in-ceiling series is finished in white and may also be painted to blend with any décor while the pendant is also available in black as standard.

Low Impedance and Transformer Options

All models have a nominal impedance of 16 ohms, enabling four or more speakers to be driven in parallel by one amplifier channel, thereby maximising efficiency and minimising cost.

All 'T' designated models are fitted with an internal high-quality 70V/100V multi-tap line transformer with a switch to select the output level.

Overload Protection

For full-bandwidth protection, the low and high-frequency sections are individually protected against overload in all models.



ACS-40TS

TYPE	Ultra-compact, passive two-way ceiling speaker, ported bass reflex
FREQUENCY RESPONSE (1)	106Hz-20kHz \pm 3dB, -10dB @ 73Hz
DRIVERS	LF: 4" /1" high-temp voice coil, coated paper cone, rubber surround, ferrite motor, pressed steel chassis HF: 0.75" silk dome, neodymium motor
RATED POWER (2)	40W AES, 160W peak
SENSITIVITY (4)	86dB / 1W(4V) / 1m
MAXIMUM SPL (9)	108dB peak
NOMINAL IMPEDANCE	16 ohms
DISPERSION (-6dB)	180° conical up to 10kHz
CROSSOVER	3.5 kHz passive (LF and HF auto-resetting fuses)
TRANSFORMER TAPS	70V: 20w / 10w / 5w / 2.5w, 100V: 20w / 10w / 5w
RECOMMENDED HIGH-PASS FILTER	75Hz 24dB/oct
CONNECTORS	Ceramic connector (in and link) located behind fire-retardant steel cover
ACCESSORIES (included)	2 tile rails, C-ring backing plate, Cut-out template
DIMENSIONS	(OD) 221mm x (D) 98mm (OD) 8.7in x (D) 3.9in
WEIGHT	2.2kg (4.8lbs)



ACS-55T

TYPE	Compact, passive two-way ceiling speaker, ported bass reflex
FREQUENCY RESPONSE (1)	98Hz-20kHz \pm 3dB, -10dB @ 62Hz
DRIVERS	LF: 5.25" /1" high-temp voice coil, coated paper cone, rubber surround, ferrite motor, pressed steel chassis HF: 0.75" silk dome, neodymium motor
RATED POWER (2)	50W AES, 200W peak
SENSITIVITY (4)	90dB / 1W(4V) / 1m
MAXIMUM SPL (9)	113dB peak
NOMINAL IMPEDANCE	16 ohms
DISPERSION (-6dB)	150° conical up to 7kHz
CROSSOVER	3kHz passive (LF and HF auto-resetting fuses)
TRANSFORMER TAPS	70V: 30w / 15w / 7.5w / 3.75w, 100V: 30w / 15w / 7.5w
RECOMMENDED HIGH-PASS FILTER	65Hz 24dB/oct
CONNECTORS	Ceramic connector (in and link) located behind fire-retardant steel cover
ACCESSORIES (included)	2 tile rails, C-ring backing plate, Cut-out template
DIMENSIONS	(OD) 245mm x (D) 193mm (OD) 9.7in x (D) 7.6in
WEIGHT	3kg (6.6lbs)



ACS-55TS

TYPE	Compact, passive two-way ceiling speaker, ported bass reflex
FREQUENCY RESPONSE (1)	117Hz-20kHz \pm 3dB, -10dB @ 79Hz
DRIVERS	LF: 5.25" /1" high-temp voice coil, coated paper cone, rubber surround, ferrite motor, pressed steel chassis HF: 0.75" silk dome, neodymium motor
RATED POWER (2)	50W AES, 200W peak
SENSITIVITY (4)	90dB / 1W(4V) / 1m
MAXIMUM SPL (9)	113dB peak
NOMINAL IMPEDANCE	16 ohms
DISPERSION (-6dB)	150° conical up to 7kHz
CROSSOVER	3kHz passive (LF and HF auto-resetting fuses)
TRANSFORMER TAPS	70V: 30w / 15w / 7.5w / 3.75w, 100V: 30w / 15w / 7.5w
RECOMMENDED HIGH-PASS FILTER	65Hz 24dB/oct
CONNECTORS	Ceramic connector (in and link) located behind fire-retardant steel cover
ACCESSORIES (included)	2 tile rails, C-ring backing plate, Cut-out template
DIMENSIONS	(OD) 245mm x (D) 102mm (OD) 9.7in x (D) 4in
WEIGHT	2.8kg (6.2lbs)



ACP-55T

TYPE	Passive two-way pendant speaker, ported bass reflex
FREQUENCY RESPONSE (6)	98Hz-20kHz \pm 3dB -10dB @ 56Hz
DRIVERS	LF: 5.25" /1" high-temp voice coil, coated paper cone, rubber surround, ferrite motor, pressed steel chassis HF: 0.75" silk dome, neodymium motor
RATED POWER (2)	50W AES, 200W peak
SENSITIVITY (7)	86dB / 1W(4V) / 1m (full space)
MAXIMUM SPL (9)	109dB Peak
NOMINAL IMPEDANCE	16 ohms
DISPERSION (-6dB)	150° conical up to 7kHz
CROSSOVER	3kHz passive (LF and HF auto-resetting fuses)
TRANSFORMER TAPS	70V: 30w / 15w / 7.5w / 3.75w 100V: 30w / 15w / 7.5w
CONNECTORS	Ceramic connector (in and link)
DIMENSIONS	(OD) 246mm x (D) 157 mm (175mm including grille) (OD) 9.7in x (D) 6.2in (6.9in including grille)
WEIGHT	3.46kg (7.62lbs)





Atomic Beer Project, Australia

A80T

TYPE	Compact passive two-way system, front ported bass reflex
FREQUENCY RESPONSE (1)	63Hz-17kHz ± 3dB -10dB @ 50Hz
DRIVERS	LF: 8" with 2" high-temp voice coil, ferrite motor system HF: 1" with 1" exit polymer dome compression driver
RATED POWER (2)	200W AES, 800W peak
SENSITIVITY (1)	91dB/1W/1m
MAXIMUM SPL (9)	120dB peak
NOMINAL IMPEDANCE	8 ohms
DISPERSION (-6dB)	90° H x 50° V
CROSSOVER	2.3kHz passive (LF and HF auto-resetting fuses)
TRANSFORMER TAPS	70V: 60/30/15/7.5W 100V: 60/30/15W
RECOMMENDED HIGH-PASS FILTER	40Hz 24dB/oct LoZ, 60Hz 24dB/oct LT
ENCLOSURE	ABS, UL 94V-0 rated
FINISH	Black or white
FITTINGS	Wall bracket included
DIMENSIONS EXCL. BRACKET	(W) 246mm x (H) 421mm x (D) 233mm (W) 9.69in x (H) 16.56in x (D) 9.18in
WEIGHT	8.5kg (18.7lbs)



A55

TYPE	Ultra-compact passive two-way system, front ported bass reflex
FREQUENCY RESPONSE (1)	90Hz-17kHz \pm 3dB -10dB @ 65Hz
DRIVERS	LF: 5.25" /1" high-temp voice coil, coated paper cone, rubber surround, ferrite motor, pressed steel chassis HF: 0.75" silk dome, neodymium motor
RATED POWER (2)	50W AES, 200W peak
SENSITIVITY (1)	90dB/1W/1m
MAXIMUM SPL (9)	113dB peak
NOMINAL IMPEDANCE	16 ohms
DISPERSION (-6dB)	110° H x 80° V
CROSSOVER	3.5kHz passive (LF and HF auto-resetting fuses)
RECOMMENDED HIGH-PASS FILTER	60Hz 24dB/oct
ENCLOSURE	ABS, UL 94V-0 rated
FINISH	Black or white
FITTINGS	Wall bracket included
DIMENSIONS EXCL. BRACKET	(W) 152mm x (H) 245mm x (D) 140mm (W) 6in x (H) 9.6in x (D) 5.5in
WEIGHT	2.21kg (4.9lbs)



A40

TYPE	Ultra-compact passive two-way system, front ported bass reflex
FREQUENCY RESPONSE (1)	98Hz-17kHz \pm 3dB -10dB @ 70Hz
DRIVERS	LF: 4" /1" high-temp voice coil, coated paper cone, rubber surround ferrite motor, pressed steel chassis HF: 0.75" silk dome, neodymium motor
RATED POWER (2)	40W AES, 160W peak
SENSITIVITY (1)	87dB/1W/1m
MAXIMUM SPL (9)	109dB peak
NOMINAL IMPEDANCE	16 ohms
DISPERSION (-6dB)	110° H x 80° V
CROSSOVER	3.5kHz passive (LF and HF auto-resetting fuses)
RECOMMENDED HIGH-PASS FILTER	60Hz 24dB/oct
ENCLOSURE	ABS, UL 94V-0 rated
FINISH	Black or white
FITTINGS	Wall bracket included
DIMENSIONS EXCL. BRACKET	(W) 124mm x (H) 200mm x (D) 114mm (W) 4.9in x (H) 7.9in x (D) 4.5in
WEIGHT	1.75kg (3.9lbs)



A55T

TYPE	Ultra-compact passive two-way system, front ported bass reflex
FREQUENCY RESPONSE (1)	90Hz-17kHz \pm 3dB -10dB @ 65Hz
DRIVERS	LF: 5.25" /1" high-temp voice coil, coated paper cone, rubber surround, ferrite motor, pressed steel chassis HF: 0.75" silk dome, neodymium motor
RATED POWER (2)	50W AES, 200W peak
SENSITIVITY (1)	90dB/1W/1m
MAXIMUM SPL (9)	113dB peak
NOMINAL IMPEDANCE	16 ohms
DISPERSION (-6dB)	110° H x 80° V
CROSSOVER	3.5kHz passive (LF and HF auto-resetting fuses)
TRANSFORMER TAPS	70V: 30w / 15w / 7.5w / 3.75w 100V: 30w / 15w / 7.5w
RECOMMENDED HIGH-PASS FILTER	60Hz 24dB/oct
ENCLOSURE	ABS, UL 94V-0 rated
FINISH	Black or white
FITTINGS	Wall bracket included
DIMENSIONS EXCL. BRACKET	(W) 152mm x (H) 245mm x (D) 140mm (W) 6in x (H) 9.6in x (D) 5.5in
WEIGHT	2.81kg (6.2lbs)



A40T

TYPE	Ultra-compact passive two-way system, front ported bass reflex
FREQUENCY RESPONSE (1)	98Hz-17kHz \pm 3dB -10dB @ 70Hz
DRIVERS	LF: 4" /1" high-temp voice coil, coated paper cone, rubber surround, ferrite motor, pressed steel chassis HF: 0.75" silk dome, neodymium motor
RATED POWER (2)	40W AES, 160W peak
SENSITIVITY (1)	87dB/1W/1m
MAXIMUM SPL (9)	109dB peak
NOMINAL IMPEDANCE	16 ohms
DISPERSION (-6dB)	110° H x 80° V
CROSSOVER	3.5kHz passive (LF and HF auto-resetting fuses)
TRANSFORMER TAPS	70V: 20w / 10w / 5w / 2.5w 100V: 20w / 10w / 5w
RECOMMENDED HIGH-PASS FILTER	60Hz 24dB/oct
ENCLOSURE	ABS, UL 94V-0 rated
FINISH	Black or white
FITTINGS	Wall bracket included
DIMENSIONS EXCL. BRACKET	(W) 124mm x (H) 200mm x (D) 114mm (W) 4.9in x (H) 7.9in x (D) 4.5in
WEIGHT	2.13kg (4.7lbs)





Third Reformed Church, Iowa

Electronics

Top quality loudspeakers require top quality amplification and control, and Martin Audio offer just that in the iKON and VIA Series of high-performance, lightweight, power amplifiers, and DX Controllers.

With Martin Audio's enviable reputation for producing loudspeakers with excellent performance and high durability it is no surprise that our name appears on an equally prestigious range of high quality amplifiers and controllers.

With models suited to both touring and installed audio environments our electronic audio components supply the uncompromising sonic performance and unquestionable reliability required by the most demanding of today's sound reinforcement applications. Martin Audio Electronics – completing the circuit.

iK81

TYPE	Eight-channel Class D amplifier
TOTAL OUTPUT POWER	10,000 Watts RMS, all channels driven
DIGITAL SIGNAL PROCESSING	96kHz DSP on all inputs and outputs
COOLING	Dual vari-speed fans, front-to-back airflow
MAXIMUM AMBIENT TEMPERATURE	40°C (104°F)
ANALOGUE IN/LINK (4 CHANNELS)	4 x female, 4 x male Neutrik™ XLR
ANALOGUE INPUT IMPEDANCE	20kΩ balanced to ground
MAXIMUM ANALOGUE INPUT LEVEL	+20dBu
NOMINAL SYSTEM GAIN	32dB
AES3 IN/LINK (2 CHANNELS)	1 x female, 1 x male Neutrik™ XLR, balanced
DANTE™ (4 CHANNELS)	2 x shielded RJ45, primary and secondary
AMPLIFIER OUTPUTS	4 x Neutrik Speakon™ NL4
PROTOCOL	Ethernet
CONTROL APPLICATION	Martin Audio VU-NET™
TYPE	High performance Series Resonant
AC INPUT OPERATING RANGE	85 – 240V ~ AC, 47 – 63Hz
MAINS INRUSH CURRENT	6A at 115V, 12A at 230V (max for <10ms)
MAINS CONNECTOR	Neutrik 32A Powercon™
DIMENSIONS	(W) 482 x (H) 2U/88mm x (D) 441mm (W) 18.96in x (H) 2U/3.46in x (D) 17.35in incl handles and optional rear support
WEIGHT	12.5kg (27.5lbs)



iK41

TYPE	Four-channel Class D amplifier
TOTAL OUTPUT POWER	6,000 Watts RMS, all channels driven
DIGITAL SIGNAL PROCESSING	96kHz DSP on all inputs and outputs
COOLING	Dual vari-speed fans, front-to-back airflow
MAXIMUM AMBIENT TEMPERATURE	40°C (104°F)
ANALOGUE IN/LINK (4 CHANNELS)	4 x female, 4 x male Neutrik™ XLR
ANALOGUE INPUT IMPEDANCE	20kΩ balanced to ground
MAXIMUM ANALOGUE INPUT LEVEL	+20dBu
NOMINAL SYSTEM GAIN	32dB
AES3 IN/LINK (2 CHANNELS)	1 x female, 1 x male Neutrik™ XLR, balanced
DANTE™ (4 CHANNELS)	2 x shielded RJ45, primary and secondary
AMPLIFIER OUTPUTS	4 x Neutrik Speakon™ NL4
PROTOCOL	Ethernet
CONTROL APPLICATION	Martin Audio VU-NET™
TYPE	High performance Series Resonant
AC INPUT OPERATING RANGE	85 – 240V ~ AC, 47 – 63Hz
MAINS INRUSH CURRENT	6A at 115V, 12A at 230V (max for <10ms)
MAINS CONNECTOR	Neutrik 32A Powercon™
DIMENSIONS	(W) 482 x (H) 2U/88mm x (D) 441mm (W) 18.96in x (H) 2U/3.46in x (D) 17.35in incl handles and optional rear support
WEIGHT	12.5kg (27.5lbs)



iK42

TYPE	Four-channel Class D amplifier
TOTAL OUTPUT POWER	20,000 Watts RMS, all channels driven
DIGITAL SIGNAL PROCESSING	96kHz DSP on all inputs and outputs
COOLING	Dual vari-speed fans, front-to-back airflow
MAXIMUM AMBIENT TEMPERATURE	40°C (104°F)
ANALOGUE IN/LINK (4 CHANNELS)	4 x female, 4 x male Neutrik™ XLR
ANALOGUE INPUT IMPEDANCE	20kΩ balanced to ground
MAXIMUM ANALOGUE INPUT LEVEL	+20dBu
NOMINAL SYSTEM GAIN	32dB
AES3 IN/LINK (2 CHANNELS)	1 x female, 1 x male Neutrik™ XLR, balanced
DANTE™ (4 CHANNELS)	2 x shielded RJ45, primary and secondary
AMPLIFIER OUTPUTS	4 x Neutrik Speakon™ NL4
PROTOCOL	Ethernet
CONTROL APPLICATION	Martin Audio VU-NET™
TYPE	High performance Series Resonant
AC INPUT OPERATING RANGE	85 – 240V ~ AC, 47 – 63Hz
MAINS INRUSH CURRENT	6A at 115V, 12A at 230V (max for <10ms)
MAINS CONNECTOR	Neutrik 32A Powercon™
DIMENSIONS	(W) 482 x (H) 2U/88mm x (D) 441mm (W) 18.96in x (H) 2U/3.46in x (D) 17.35in incl handles and optional rear support
WEIGHT	12.5kg (27.5lbs)



Pilton Party, UK

VIA2004



General	
TYPE	Four-channel Class D amplifier
POWER OUTPUT**	4 x 500W into 4 ohms 4 x 250W into 8 ohms
COOLING	Vari-speed fans, front-to-back airflow
MAXIMUM AMBIENT TEMPERATURE	40°C (105°F)
Audio Inputs/Outputs	
ANALOGUE IN/LINK (4 CHANNELS)	4 x female, 4 x male Neutrik™ XLR
ANALOGUE INPUT IMPEDANCE	5 kΩ typical, balanced
MAXIMUM ANALOGUE INPUT LEVEL	+20dBu
AMPLIFIER OUTPUTS	4 x Neutrik Speakon™ NL4
Audio Performance	
FREQUENCY RESPONSE	20Hz - 20kHz +/- 0.45dB, 4 ohm load
TOTAL HARMONIC DISTORTION	0.003% typical, 1kHz @ 1W
Power Supplies	
TYPE	2 x high current, high frequency, switch-mode
AC INPUT OPERATING RANGE	100-240V +/-10%, 45 - 65Hz
MAINS CONNECTOR	1 x Neutrik Powercon™
TOTAL SYSTEM EFFICIENCY	89% (4 x 250W into 8 ohms)
Physical	
DIMENSIONS	(W) 482 x (H) 2U/88mm x (D) 441mm (W) 19in x (H) 2U/3.5in x (D) 17.4in incl handles and optional rear support
WEIGHT	8kg (17.6lbs)

VIA2502



General	
TYPE	Two-channel Class D amplifier
POWER OUTPUT**	2 x 1250W into 2 ohms 2 x 800W into 4 ohms 2 x 450W into 8 ohms 1 x 2500W bridged into 4 ohms
COOLING	Vari-speed fans, front-to-back airflow
MAXIMUM AMBIENT TEMPERATURE	40°C (105°F)
Audio Inputs/Outputs	
ANALOGUE IN/LINK (4 CHANNELS)	2 x female, 2 x male Neutrik™ XLR
ANALOGUE INPUT IMPEDANCE	10kΩ Balanced
MAXIMUM ANALOGUE INPUT LEVEL	+20dBu
AMPLIFIER OUTPUTS	2 x Neutrik Speakon™ NL4
Audio Performance	
OUTPUT NOISE	-113dBa, referenced to max output (22kHz bandwidth)
FREQUENCY RESPONSE	<10Hz - >20kHz +/- 0.25dB
TOTAL HARMONIC DISTORTION	<0.05% typical @ 1kHz, -3dB output (22kHz bandwidth)
SLEW RATE	>80V per microsecond
DAMPING FACTOR	120 ref 8 ohms
Power Supply	
TYPE	High current, high frequency switch-mode
AC INPUT OPERATING RANGE	100-240V +/-10% 45 - 65Hz
TOTAL SYSTEM EFFICIENCY	>90% typical
MAINS CONNECTOR	1 x Neutrik Powercon™
Physical	
DIMENSIONS	(W) 482 x (H) 2U/88mm x (D) 441mm (W) 19in x (H) 2U/3.5in x (D) 17.4in incl handles and optional rear support
WEIGHT	8kg (17.6lbs)

VIA5002



General	
TYPE	Two-channel Class D amplifier
POWER OUTPUT**	2 x 2500W into 4 ohms 2 x 1600W into 8 ohms
COOLING	Vari-speed fans, front-to-back airflow
MAXIMUM AMBIENT TEMPERATURE	40°C (105°F)
Audio Inputs/Outputs	
ANALOGUE IN/LINK (4 CHANNELS)	2 x female, 2 x male Neutrik™ XLR
ANALOGUE INPUT IMPEDANCE	10KΩ balanced
MAXIMUM ANALOGUE INPUT LEVEL	+20dBu
AMPLIFIER OUTPUTS	2 x Neutrik Speakon™ NL4
Audio Performance	
OUTPUT NOISE	-113dBa, referenced to max output (22kHz bandwidth)
FREQUENCY RESPONSE	<10Hz - >20kHz +/- 0.25dB
TOTAL HARMONIC DISTORTION	<0.05% typical @ 1kHz, -3dB output (22kHz bandwidth)
SLEW RATE	>80V per microsecond
DAMPING FACTOR	120 ref 8 ohms
Power Supplies	
TYPE	2 x high current, high frequency switch-mode
AC INPUT OPERATING RANGE	100-240V +/-10%
	45 - 65Hz
TOTAL SYSTEM EFFICIENCY	>90% typical
MAINS CONNECTOR	1 x Neutrik Powercon™
Physical	
DIMENSIONS	(W) 482 x (H) 2U/88mm x (D) 441mm (W) 19in x (H) 2U/3.5in x (D) 17.4in incl handles and optional rear support
WEIGHT	10kg (22lbs)

VIA5004



General	
TYPE	Four-channel Class D amplifier
POWER OUTPUT**	4 x 1250W into 2 ohms 4 x 800W into 4 ohms 4 x 450W into 8 ohms 2 x 2500W bridged into 4 ohms
COOLING	Vari-speed fans, front-to-back airflow
MAXIMUM AMBIENT TEMPERATURE	40°C (105°F)
Audio Inputs/Outputs	
ANALOGUE IN/LINK (4 CHANNELS)	4 x female, 4 x male Neutrik™ XLR
ANALOGUE INPUT IMPEDANCE	10KΩ balanced
MAXIMUM ANALOGUE INPUT LEVEL	+20dBu
AMPLIFIER OUTPUTS	4 x Neutrik Speakon™ NL4
Audio Performance	
OUTPUT NOISE	-113dBa, referenced to max output (22kHz bandwidth)
FREQUENCY RESPONSE	<10Hz - >20kHz +/- 0.25dB
TOTAL HARMONIC DISTORTION	<0.05% typical @ 1kHz, -3dB output (22kHz bandwidth)
SLEW RATE	>80V per microsecond
DAMPING FACTOR	120 ref 8 ohms
Power Supplies	
TYPE	2 x high current, high frequency switch-mode
AC INPUT OPERATING RANGE	100-240V +/-10%
	45 - 65Hz
TOTAL SYSTEM EFFICIENCY	>90% typical
MAINS CONNECTOR	1 x Neutrik Powercon™
Physical	
DIMENSIONS	(W) 482 x (H) 2U/88mm x (D) 441mm (W) 19in x (H) 2U/3.5in x (D) 17.4in incl handles and optional rear support
WEIGHT	10kg (22lbs)

** Continuous average power per channel, all channels driven with music program material and a nominal ambient temperature of 40°C /105°F

U-HUB



General	
TYPE	Ethernet to U-NET™ bridge
SUPPORTED PROTOCOLS	Ethernet and U-NET™
CONTROL APPLICATION	Martin Audio VU-NET™
AC OPERATING RANGE	100-240VAC Nominal, 50-60Hz
Rear Panel	
AUDIO INPUTS 1, 2 and 3	3 x 3 pin female XLR type
ETHERNET	1 x Neutrik® Ethercon
MAINS POWER	3 pin IEC with cable locking mechanism
FUSE	User-replaceable 1A T-type 20mm
Front Panel	
AUDIO OUT AND U-NET	6 x ODU 8-pin connector ports
	Audio In 1, 2, 3, Out on ports 1, 3, 5
	Bi-colour Green/Red LED on port 1 and 6
UNET STATUS	Yellow LED: On = Static IP, Off = Dynamic
IP CONFIGURATION	
IP RESET (TO DYNAMIC)	Recessed push button
ETHERNET CONNECTION	Green LED = Online
MAINS POWER	Red LED = Mains power present
Physical	
DIMENSIONS	(W) 482mm x (H) 1U/44mm x (D) 268mm
	(W) 19in x (H) 1U/1.75in x (D) 10.6in
WEIGHT	3.5Kg (7.7lbs)

DX4.0



General	
TYPE	4 input/8 output digital loudspeaker processor
OPERATING TEMPERATURE	0 to 45°C
HUMIDITY RANGE	0 to 80% RH (non-condensing)
Audio Performance	
INPUT IMPEDANCE	>10kΩ balanced
OUTPUT IMPEDANCE	<100Ω balanced
MAX INPUT LEVEL	+20dBu
MAX OUTPUT LEVEL	+18dBu into 600Ω
FREQUENCY RESPONSE	10Hz - 40kHz
INPUT DYNAMIC RANGE	>120dBa typ.
OUTPUT DYNAMIC RANGE	>118dBa typ.
TOTAL HARMONIC DISTORTION	<0.008% typ. 20Hz-20kHz
Digital Signal Processing	
SAMPLE RATE	96kHz
AES3 INPUT SAMPLE RATE	28kHz - 108kHz
AES3 OUTPUT SAMPLE RATE	96kHz
Power Supply	
AC OPERATING RANGE	100-240V +/-10%
POWER CONSUMPTION	30W
Control and Monitoring	
PROTOCOL	Ethernet
CONTROL APPLICATION	Martin Audio VU-NET™
Connectors	
AUDIO INPUT	4 x 3 pin female XLR for analogue or AES3 pairs
AUDIO OUTPUT	8 x 3 pin male XLR for analogue or AES3 pairs
ETHERNET	1 x shielded RJ45
DANTE™ NETWORK	2 x shielded RJ45, primary and secondary
AUX PORT	Phoenix connector for contact closure
MAINS POWER	3 pin IEC
Physical	
DIMENSIONS	(W) 482mm x (H) 1U/44mm x (D) 184mm
	(W) 19in x (H) 1U/1.75in x (D) 7.2in
WEIGHT	2.7kg (6lbs)

DX0.6



General	
INPUT IMPEDANCE:	20k Ohm balanced
OUTPUT IMP:	100R
MAX INPUT LEVEL:	+20dBu
MAX OUTPUT LEVEL:	+18dBu
CROSSTALK:	< -95dB
SAMPLE RATE:	96kHz
SIGNAL TO NOISE RATION	>113dB (A weighted)
NOISE FLOOR:	< -94dB (A weighted)
COMMON MODE REJECTION RATIO	60dB
FREQUENCY RESPONSE:	20Hz - 40kHz +0.3dB
INPUT A/D DYNAMIC RANGE:	118dB
OUTPUT D/A DYNAMIC RANGE:	118dB
THD (+4dBu 1kHz):	<0.003%
MAINS VOLTAGE RANGE:	85-230VAC 50-60Hz
NOMINAL POWER CONSUMPTION:	30W

Connectors	
AUDIO INPUT:	2 x 3 pin female XLR
AUDIO OUTPUT:	6 x 3 pin male XLR
ETHERNET:	Shielded RJ45, Dynamic or Static IP
RS485:	2 x RJ45
USB:	1 x USB B (Front Panel)
MAINS:	3 pin IEC

Processing	
SIGNAL GENERATOR:	White/pink noise, -30dBu to +10dBu
GAIN:	-18dB to +12dB, step accuracy 0.1dB
INPUT EQUALISER:	10 band PEQ, gain range +15dB 16 x Filter types
INPUT GATE:	Threshold: -40 to -80dBu Attack: 1 to 1,000ms Release: 1 to 1,000ms
ROUTING:	Freely assignable 2-in, 6 out Up to 30dB attenuation on each node
DELAY:	Input: 600ms Output: 200ms Steps: 20us, Units: milliseconds, metres, feet
OUTPUT FILTERS:	High & Low Pass, -6dB/Octave to -48dB/Octave Slope types: Butterworth, Bessel, Linkwitz Riley
OUTPUT EQUALISATION:	8 band PEQ, gain +15dB 16 x filter types FIR Filter Import

PROGRAM LIMITER:	Threshold: -10 to +20dBu Attack: 1 to 1,000ms Release: 10 to 3,000ms
PEAK LIMITER:	Threshold: 0 to 12dB above Program Limiter Threshold Release: Fast (91ms), Medium (350ms), Slow (800ms)

Dimensions	
Height:	1U (44mm) [1.75"]
Width:	482mm [19"]
Depth:	230mm [9.1"]
Weight:	3.0kg [6.6lb]

DX0.4



General	
INPUT IMPEDANCE:	20k Ohm balanced
OUTPUT IMP:	100R
MAX INPUT LEVEL:	+20dBu
MAX OUTPUT LEVEL:	+18dBu
CROSSTALK:	< -95dB
SAMPLE RATE:	96kHz
SIGNAL TO NOISE RATION	>113dB (A weighted)
NOISE FLOOR:	< -94dB (A weighted)
COMMON MODE REJECTION RATIO	60dB
FREQUENCY RESPONSE:	20Hz - 40kHz +0.3dB
INPUT A/D DYNAMIC RANGE:	118dB
OUTPUT D/A DYNAMIC RANGE:	118dB
THD (+4dBu 1kHz):	<0.003%
MAINS VOLTAGE RANGE:	85-230VAC 50-60Hz
NOMINAL POWER CONSUMPTION:	30W

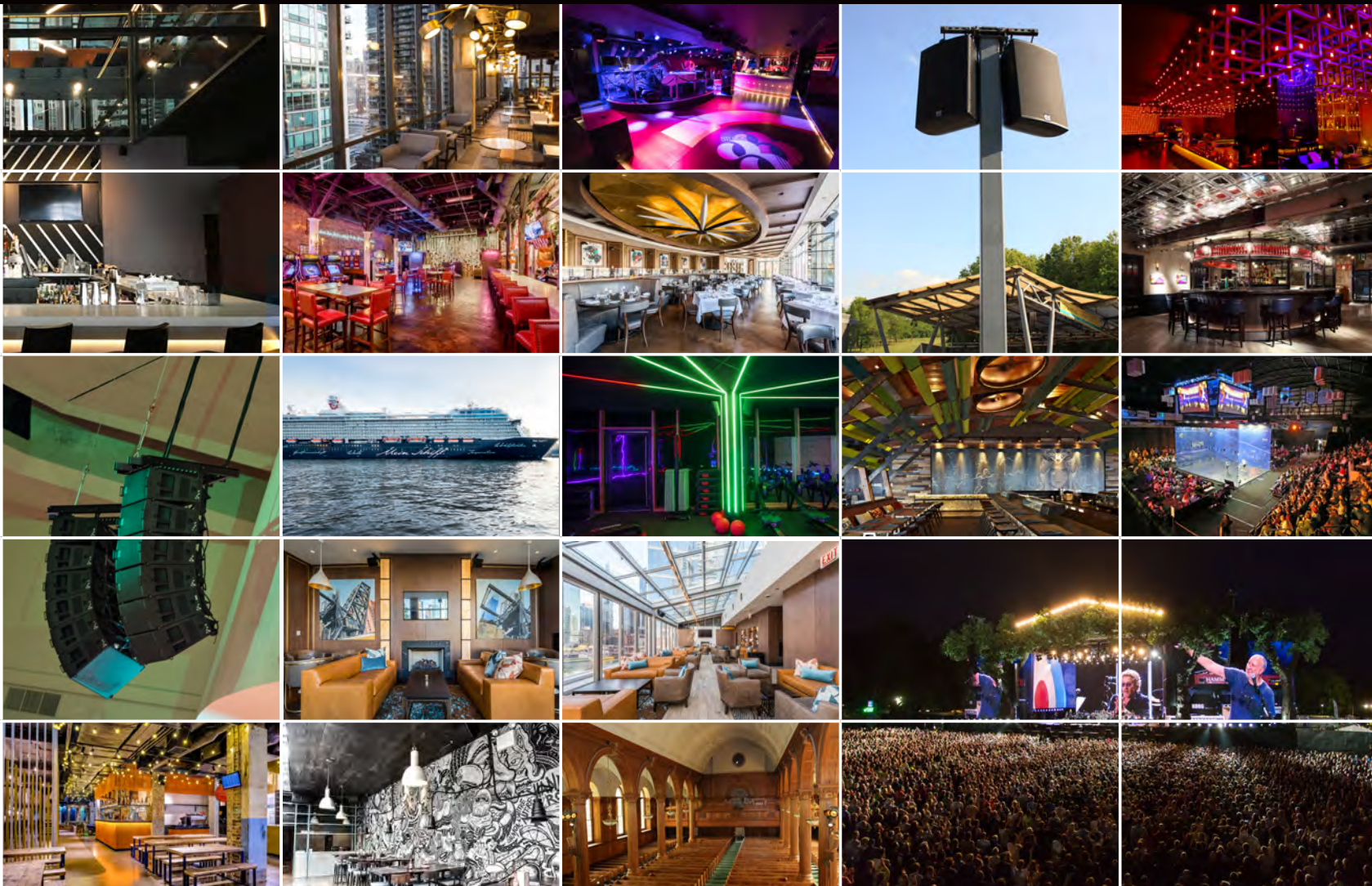
Connectors	
AUDIO INPUT:	2 x 3 pin female XLR
AUDIO OUTPUT:	4 x 3 pin male XLR
ETHERNET:	Shielded RJ45, Dynamic or Static IP
RS485:	2 x RJ45
USB:	1 x USB B (Front Panel)
MAINS:	3 pin IEC

Processing	
SIGNAL GENERATOR:	White/pink noise, -30dBu to +10dBu
GAIN:	-18dB to +12dB, step accuracy 0.1dB
INPUT EQUALISER:	10 band PEQ, gain range +15dB 16 x Filter types
INPUT GATE:	Threshold: -40 to -80dBu Attack: 1 to 1,000ms Release: 1 to 1,000ms
ROUTING:	Freely assignable 2-in, 4 out Up to 30dB attenuation on each node
DELAY:	Input: 600ms Output: 200ms Steps: 20us, Units: milliseconds, metres, feet
OUTPUT FILTERS:	High & Low Pass, -6dB/Octave to -48dB/Octave Slope types: Butterworth, Bessel, Linkwitz Riley
OUTPUT EQUALISATION:	8 band PEQ, gain +15dB 16 x filter types FIR Filter Import

PROGRAM LIMITER:	Threshold: -10 to +20dBu Attack: 1 to 1,000ms Release: 10 to 3,000ms
PEAK LIMITER:	Threshold: 0 to 12dB above Program Limiter Threshold Release: Fast (91ms), Medium (350ms), Slow (800ms)

Dimensions	
Height:	1U (44mm) [1.75"]
Width:	482mm [19"]
Depth:	230mm [9.1"]
Weight:	3.0kg [6.6lb]





United Kingdom

Telephone: +44 (0)1494 535312

E-mail: info@martin-audio.com

Web: www.martin-audio.com

Martin Audio Ltd. Century Point, Halifax Road,
Cressex Business Park, High Wycombe,
Buckinghamshire HP12 3SL, England.

USA

Telephone: 323 381 5310

